



## E Protein SARS-CoV2

Long Name:

**Envelope Protein (1 - 75) SARS-CoV2**

Catalog Number (DU Number):

**DU 68522**

Accession:

**QHD43418.1**

Expression

**bacteria**

Terminus and Tag:

**N-Term MBP Uncleaved**

Purification Method:

**Amylose Resin**

Calculated Molecular Mass:

**Mono-Isotopic Mass: 52, 570.91 daltons**

**Average Mass: 52, 603.96 daltons**

Purity:

**80 %**

Storage Buffer:

**50 mM Tris-HCl pH 7.5, 270 mM Sucrose, 150 mM NaCl, 0.1 mM EGTA, 0.1 % 2-mercaptoethanol, 0.03 % Brij-35**

Storage Temperature:

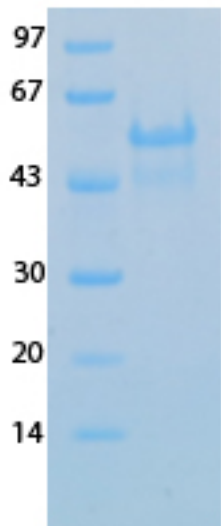
**-70 °C**

Theoretical PI:

**4.97**

Gel Information :

**Gel Image 1:**



Native Sequence:

**MKIEEGKLVWINGDKGYNGLAEVGGKFEKDTGIKVTVEHPDKLEEKFPQVAATGDGPDIIFWAHDRF  
GGYAQSGLLAEITPKAFQDKLYPFTWDAVRYNGKLIAYPIAVEALSLIYNKDLLPNPPKTWEEIPALD  
KELKAKGKSALMFNLQEPYFTWPLIAADGGYAFKYENKDYDIKDVGVNAGAKAGLTFLVDLIKNDK  
MNADTDYSIAEAFNKGETAMTINGPWAWSNIDTSKVNYGVTVLPTFKGQPSKPFVGVLSAGINAAS  
PNKELAKEFLENYLLTDEGLEAVNKDKPLGAVALKSYEEELVKDPRIATMENAQKGEIMPNIQMS  
AFWYAVRTAVINAASGRQTVDEALKDAQTNSSNNNNNNNNNLGDDDDKVPEFLEVLFFQGPLGSM  
YSFVSEETGLIVNSVLLFLAFVFLVTLAILTALRLCAYCCNIVNVSLVKPSFYVYSRVKLNLSRV  
DLLV** Amino acids M1 – V75 (end). Residue M404 of the fusion protein is equivalent to M1 of the native enzyme. The MBP tag is located at residues 1 – 367.

Protease Cleavage:

**PreScission (LEVLFFQG) residues 393 – 400**

Price per aliquot (100µg):

**£110.00**