

S Protein SARS-CoV HSZ-Cc

Long Name:

Spike Protein (1 - 1255) SARS-CoV HSZ-Cc

Catalog Number (DU Number):

DU67727

Accession:

AAX16192.1

Expression

bacteria

Terminus and Tag:

N-Term GST Uncleaved

Purification Method:

GSH Agarose

Calculated Molecular Mass:

Mono-Isotopic Mass: 165, 875.35 daltons

Average Mass: 165, 982.16 daltons

Purity:

50 %

Storage Buffer:

50 mM Tris-HCl pH 7.5, 270 mM Sucrose, 150 mM NaCl, 0.1 mM EGTA, 0.1 % 2-mercaptoethanol, 0.03 % Brij-35

Storage Temperature:

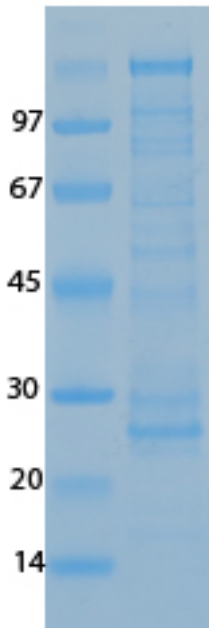
-70 °C

Theoretical PI:

5.46

Gel Information :

Gel Image 1:



Native Sequence:

**MSPILGYWKIKGLVQPTRLLLEYLEEKYEEHLYERDEGDKWRNKKFELGLEFPNLPYYIDGDVKLTQS
 MAIRYIADKHNMLGGCPKERAEISMLEGAVLDIRYGVSRAYSKDFETLKVDFLSKLPEMLKMFEDRL
 CHKTYLNGDGHVTHPDFMLYDALDVVLYMDPMCLDAFPKLVCFKKRIEAIQIDKYLKSSKYIAWPLQG
 WQATFGGGDHPKSDLEVLFGQPLGSMFIFLLFLTSTSGSDLDRCTTFDDVQAPNYTQHTSSMRGVY
 YPDEIFRSDTLYLTQDLFLPFYSNVTGFHTINHTFDNPVVPKDGIFYAATEKSNVVRGWVFGSTMNKK
 SQSVIIINNSTNVVIRACNFELCDNPFFAVSKPMGTQTHMIFDNAFNCTFEYISDAFSLDVSEKSGNFK
 HLREFVFKNKDGLYVYKGYQPIDVVRDLPSGFNTLKIPIFKLPLGINITNFRAILTAFAQAQDTWGSA
 AAYFVGYLKPTTFMLKYDENGITDAVDCSQNPLAELKCSVKSEIDKGIYQTSNFRVVPDGDVVRFP
 NITNLCPFGEVFNATKFPSVYAWERKKISNCVADYSVLYNSTFFSTFKCYGVSATKLNLDLFCFSNVYAD
 SFVVKGDDVRQIAPGQTGVIADYNYKLPDDFMGCVLAWNTRNIDATSTGNVNYKYRYLRHGKLRPFE
 RDISNVPFSPDGKPCPPALNCYWPLNDYGFYTTTGIGYQPYRVVLSFELLNAPATVCGPKLSTDLI
 KNQCVNFNENGLTGTGVLTPSSKRFQPFQFGRDVSDFTDSVRDPKTSEILDISPCSFGGVSVITPGT
 NASSEVAVLYQDVNCTDVSTAIHADQLTPAWRIYSTGNNVFQTQAGCLIGAEHVDTSEYCDIPIGAGIC
 ASYHTVSLLRSTSQKSIVAYTMSLGADSSIAYSNNTIAIPTNFSISITTEVMPVSMAKTSVDCNMYICGD
 STECANLLLQYGSFCTQLNRLALSGIAAEQDRNTREVFAQVKQMYKPTLTKDFGGFNFSQILPDPLKP
 TKRSFIEDLLFNKVTLADAGFMKQYGECLGDINARDLICAQKFNGLTVLPPLLTDDMIAAYTAALVSGT
 ATAGWTFGAGAALQIPFAMQMAYRFNGIGVTQNVLYENQKQIANQFNKAISQIQESLTTTSTALGKLQ
 DVVNQNAQALNTLVKQLSSNFGAISSVLNDILSRLDKVEAEVQIDRLITGRLQSLQTYVTQQLRIRAAEIR
 ASANLAATKMSECVLGQSKRVDFCGKGYHLSFPQAAPHGVVFLHVTYVPSQERNFTTAPAICHEG
 KAYFPREGVVFVNGTSWFITQRNFFSPQIITDNTFVSGNCDVVIGIINNTVYDPLQPELDSFKEELDKY
 FKNHTSPDVDLGDISGINASVUNIQQEIDRLNEVAKNLNESLIDLQELGKYEQYIKWPWYVWLGFIAGLI
 AIVMTILLCCMTSCCSCLKGACSCGSCCKFDEDDSEPVFKGVKLHYT** Amino acids M1 – T1255
 (end). Residue M232 of the fusion protein is equivalent to M1 of the native enzyme. The GST tag
 is located at residues 1 – 220.

Protease Cleavage:

PreScission (LEVLFGQP) residues 221 - 228

Price per aliquot (100µg):

£110.00