

E Protein SARS-CoV2

Long Name:

Envelope Protein (1 - 75) SARS-CoV2

Catalog Number (DU Number):

DU68523

Accession:

QHD43418.1

Expression

bacteria

Terminus and Tag:

N-Term GST Uncleaved

Purification Method:

GSH-Agarose

Calculated Molecular Mass:

Mono-Isotopic Mass: 35, 189.20 daltons

Average Mass: 35, 166.17 daltons

Purity:

50 %

Storage Buffer:

50 mM Tris-HCl pH 7.5, 270 mM Sucrose, 150 mM NaCl, 0.1 mM EGTA, 0.1 % 2-mercaptoethanol, 0.03 % Brij-35

Storage Temperature:

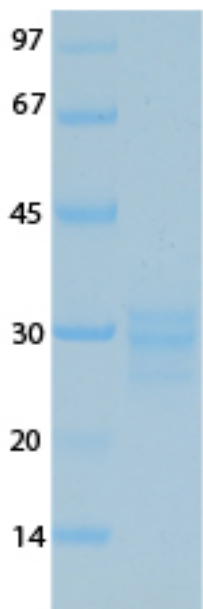
-70 °C

Theoretical PI:

6.11

Gel Information :

Gel Image 1:



Native Sequence:

**MSPILGYWKIKGLVQPTRLLLEYLEEKYEEHLYERDEGDKWRNKKFELGLEFPNLPYYIDGDVKLTQS
MAIRYIADKHNMLGGCPKERAEISMLEGAVLDIRYGVSR IAYS KDFETLKVDFLSKLP EMLKMFEDRL
CHKTYLNGDHVTHPDFMLYDALDVVLYMDPMCLDAFPKLVCFKKR IEAIPQIDKYLKSSKYIAWPLQG
WQATFGGGDHPKSDLEVL FQG PLGSMYSFVSEETGTLIVNSVLLFLAFVV FLLVTLAILTALRLCAY
CCNIVNVSLVKPSFYVYSRVKLNSSRVPDLLV** Amino acids M1 – V75 (end). Residue M232 of the fusion protein is equivalent to M1 of the native enzyme. The GST tag is located at residues 1 – 220.

Protease Cleavage:

PreScission (LEVL FQGP) residues 221 - 228

Price per aliquot (100µg):

£110.00