

S Protein SARS-CoV2

Long Name:

Spike Protein (1 - 1273) SARS-CoV2

Catalog Number (DU Number):

DU67743

Accession:

QHD43416.1

Expression

bacteria

Terminus and Tag:

N-Term MBP Uncleaved

Purification Method:

Amylose resin

Calculated Molecular Mass:

Mono-Isotopic Mass: 185, 299.77 daltons

Average Mass: 185, 417.39 daltons

Purity:

65 %

Storage Buffer:

50 mM Tris-HCl pH 7.5, 270 mM Sucrose, 150 mM NaCl, 0.1 mM EGTA, 0.1 % 2-mercaptoethanol, 0.03 % Brij-35

Storage Temperature:

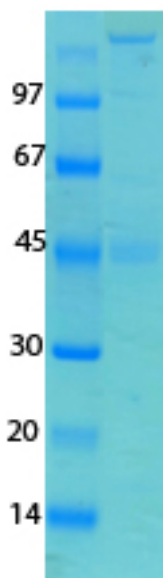
-70 °C

Theoretical PI:

5.59

Gel Information :

Gel Image 1:



Native Sequence:

**MKIEEGKLVWINGDKGYNGLAEVGGKFEKDTGIKVTVHEHPDKLEEKFPQVAATGDGPDIIFWAHDRF
GGYAQSGLLAEITPKAFQDKLYPFTWDAVRYNGKLIAYPIAVEALS LIYNKDLLPNPPKTWEEIPALD
KELKAKGKSALMFNLQEPYFTWPLIAADGGYAFKYENGGYDIKDVGVNAGAKAGLTFLVDLIKNGH
MNADTDYSIAEAFNKGGETAMTINGPWAWSNIDTSKVNYGVTVLPTFKGQPSKPFVGVLSAGINAAS
PNKELAKEFLENYLLTDEGLEAVNKDKPLGAVALKSYEEELVKDPRIATMENAQKGEIMPNIQMS
AFWYAVRTAVINAASGRQTVDEALKDAQTNSSNNNNNNNNNNLGDGDDKVPFLEVLFGGPLGSM
FVFLVLLPLVSSQCVNLTTRTQLPPAYTNSFTRGVYYPDKVFRSSVLHSTQDLFLPFFSNVTWFHAIHV
SGTNGTKRFDNPVLPFNDGVYFASTEKSNIIRGWIFGTTLDLSDKTQSLIVNATNVVIKVFCEFCNDP
FLGVYYHKNKSWMESEFRVYSSANNCTFEYVSQPFLMDLEGKQGNFKNLREFVFKNIDGYFKIYSK
HTPINLVRDLPQGFSALEPLVDLPIGINITRFQTLALHRSYLTGDSGWTAGAAAYVGYLQPRTF
LLKYNENGTITDAVDCALDPLSETKCTLSFTVEKGIYQTSNFRVQPTESIVRFPNITNLCPFGEVFNAT
RFASVYAWNRKRISNCVADYSVLYNSASFSTFKCYGVSPKLNLDLCTNVYADSFVIRGDEVQRQIAPG
QTGKIADYNYKLPDDFTGCVIAWNSNNLDSKVGGNYNLYRFRKSNLKPFERDISTEIQAGSTPCN
GVEGFNCYFPLQSYGFQPTNGVGYQPVRVVLSEFLLHAPATVCGPKKSTNLVKNKCVNFNFNGLT
GTGVLTESNKKFLPFQFGRDIADTTDAVRDPQTLTLEILDITPCSFGGVSVITPGTNTSNQVAVLYQDVN
CTEVPVAIHADQLTPTWRVYSTGNSVFQTRAGCLIGAEHVNSYECDIPIGAGICASYQTQTNSPRRA
RSVASQSIIAYTMSLGAENSVAYSNNISIAIPTNFTISVTTEILPVSMTKTSVDCTMYICGDSTECNLLLQ
YGSFCTQLNRALTGIAVEQDKNTQEVFAQVKQIYKTPPIKDFGGFNFSQILPDPSKPSKRSFIEDLLFN
KVTLADAGFIKQYGDCLGDIAARDLICAQKFNGLTVLPPLTDEMIAQYTSALLAGTITSGWTFGAGA
ALQIPFAMQMAYRFNGIGVTQNVLYENQKLIANQFNSAIGKIQDSLSTASALGKLQDVVNQNAQALN
TLVKQLSSNFGAISSVLNDILSRDLKVEAEVQIDRLITGRLQSLQTYVTQQLIRAAEIRASANLAATKMS
ECVLGQSKRVDFCGKGYHLMSFPQSAPHGVVFLHVTYVPAQEKNFTTAPAICHGDKAHFPREGVVFV
SNGTHWFVTQRNFYEPQIITDNTFVSGNCDVVIGIVNNTVYDPLQPELDSFKEELDKYFKNHTSPDVD
LGDISGINASVVNIQKEIDRLNEVAKNLNESLIDLQELGKYEYQIKWPWYIWLGFIAGLIAIVMVTIMLCC
MTSCCCLKGCCSCGSCCKFDEDDSEPVLKGVKLHYT Amino acids M1 – T1273 (end). Residue
M404 of the fusion protein is equivalent to M1 of the native enzyme. The MBP tag is located at
residues 1 – 367.**

Protease Cleavage:

PreScission (LEVLFGQP) residues 393 – 400

Price per aliquot (100µg):

£125.00