

NSP11 NSP12 SARS-CoV2

Long Name:

NSP11 NSP12 (1 - 932) SARS-CoV2

Catalog Number (DU Number):

DU67736

Accession:

QHD43415.1

Expression

bacteria

Terminus and Tag:

N-Term GST Uncleaved

Purification Method:

GSH-Agarose

Calculated Molecular Mass:

Mono-Isotopic Mass: 133, 397.72 daltons

Average Mass: 133, 484.40 daltons

Purity:

60 %

Storage Buffer:

**50 mM Tris-HCl pH 7.5, 270 mM Sucrose, 150 mM NaCl, 0.1 mM EGTA, 0.1 % 2-mercaptoethanol,
0.03 % Brij-35**

Storage Temperature:

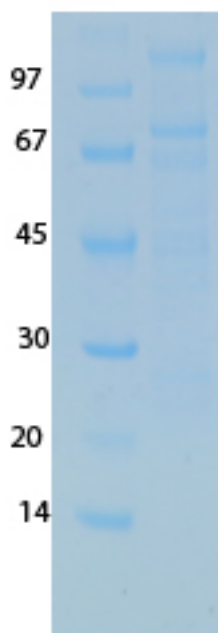
-70 °C

Theoretical PI:

6.05

Gel Information :

Gel Image 1:



Native Sequence:

**MSPILGYWKIKGLVQPTRLLLEYLEEKYEEHLYERDEGDKWRNKKFELGLEFPNLPYYIDGDVKLTQS
 MAIRYIADKHNMLGGCPKERAEISMLEGAVLDIRYGVSRIAYSKDFETLKVDFLSKLPEMLKMFEDRL
 CHKTYLNGDHSVTHPDFMLYDALDVVLYMDPMCLDAFPKLVCFKKRIEAIPQIDKYLKSSKYIAWPLQG
 WQATFGGGDHPKSDLEVLFGGPLGSSADAQSFLNRVCGVSAARLTPCGTGTSTDVVYRAFDIYND
 KVAGFAKFLKTNCCRFQEKDEDDNLIDSYFVVKRHTFSNYQHEETIYNLLKDCPAVAKHDFFKFRIDG
 DMVPHISRQRLTKYTMADLVYALRHFDEGNCDTLKEILVTYNCCDDYFNKKDWYDFVENPDILRVY
 ANLGERVRQALLKTVQFCDAMRNAGIVGLTLDNQDLNGNWDYDFGDFIQTPGSGVPVVDSSYSSL
 MPILTLTRALTAESHVDTDLTKPYIKWDLKDYDFTEERLKLFDYFYWDQTYHPNCVNCLDDRCILH
 CANFNVLVSTVFPPTSFGPLVRKIFVDGVPFVSTGYHFRELGVVHNQDVNLHSSRSLFKELLVYAAD
 PAMHAASGNLLLDKRTTCFSVAALTNNVAFQTVKPGNFNKDFYDFAVSKGFFKEGSSVELKHFFFA
 QDGNAAISDYDYRYNLPMTCDIRQLLFVVEVDKYFDCYDGGCINANQVIVNNLDKSAGFPFNKKG
 KARLYYDSMSYEDQDALFAYTKRNVIPITITQMNLKYAISAKNRARTVAGVSICSTMTNRQFHQKLLKS
 IAATRGATVIGTSKFYGGWHNMLKTVYSDVENPHLMGWDYPKCDRAMPNMLRIMASLVLARKHTT
 CCSLSHRFYRLANECAQVLSEVMCGGSLYVKPGGTSSGDATTAYANSVFNICQAVTANVNALLST
 DGNKIADKYVRNLQHRLYECLYRNRDVTDFVNEFYAYLRKHFSMMILSDDAVVCFNSTYASQGLVA
 SIKNFKSVLYYQNNVFMSEAKCWTETDLTKGPHEFCSQHTMLVKQGDDYVYLPYDPSPRILGAGCFV
 DDIVKTDGTLMIERFVSLAIDAYPLTKHPNQEYADVHLYLQYIRKLHDELTDGHMLDMYSVMLTNDNT
 SRYWEPEFYEAMYTPHTVLQ** Amino acids S1 – Q932 (end). Residue S232 of the fusion protein
 is equivalent to S1 of the native enzyme. The GST tag is located at residues 1 – 220.

Protease Cleavage:

PreScission (LEVLFGQP) residues 221 - 228

Price per aliquot (100µg):

£110.00