



RAB35 (1 - 201)

Long Name:

RAB35, member RAS oncogene family

Catalog Number (DU Number):

DU26879

Accession:

NM_001167606.1

Expression

bacteria

Terminus and Tag:

N-Term 6His Cleaved

Purification Method:

Ni²⁺-NTA agarose, Cleavage of His6-SUMO and Gel filtration

Calculated Molecular Mass:

Mono-Isotopic Mass: 23, 010.77 daltons [After tag cleavage]

Average Mass: 23, 025.22 daltons [After tag cleavage]

Purity:

>80 %

Storage Temperature:

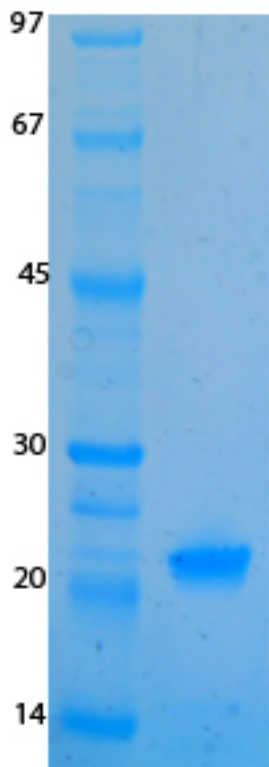
-70 °C

Theoretical PI:

8.53 [After tag cleavage]

Gel Information :

Gel Image 1:



Native Sequence:

Amino acids M1 – N201 (end) of human RAB35.

Cloning Sites:

BamH1 and Not1 sites of pET15b His6-SUMO

Price per aliquot (100µg):

£110.00