



## RAB12 (1 - 244)

Catalog Number (DU Number):

**DU52221**

Accession:

**NM\_001025300.2**

Expression

**bacteria**

Terminus and Tag:

**N-Term 6His Cleaved**

**N-Term SUMO Cleaved**

Purification Method:

**Nickel Agarose, cleavage of His6-Sumo tag and gel filtration**

Calculated Molecular Mass:

**Mono-Isotopic Mass: 27231.08 daltons**

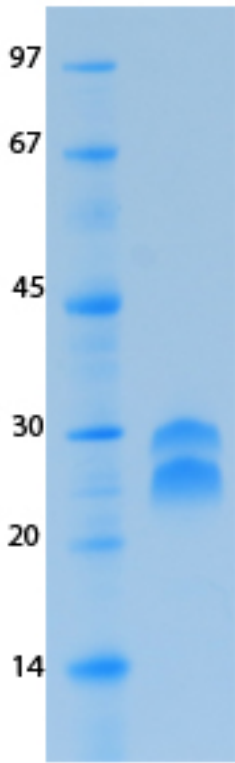
**Average Mass: 27, 248.40 daltons**

Theoretical PI:

**8.68**

Gel Information :

**Gel Image 1:**



Native Sequence:  
**Amino acids M1-C244 (end) of human RAB12**

Protease Cleavage:  
**SEN1 cleavage of SUMO tag**

Price per aliquot (100µg):  
**£110.00**