

## CK1 gamma 2 (1 - 415)

Long Name:

**Casein kinase 1 Gamma 2**

Catalog Number (DU Number):

**DU35306**

Accession:

**BC0186932**

Expression

**bacteria**

Terminus and Tag:

**N-Term GST Uncleaved**

Purification Method:

**N-terminal GST**

Assay Buffer:

**50 mM Tris-HCl pH 7.5, 0.1 mM EGTA, 0.1 % 2-mercaptoethanol, 10 mM MgAc**

Assay Substrate:

**KRRRALS\*VASLPGL (where S\* is phospho Ser) Final concentration: 300 μM**

Calculated Molecular Mass:

**Mono-Isotopic Mass: 74, 233.82 daltons**

**Average Mass: 74, 281.43 daltons**

Protein Activity:

**Constitutively Active**

Purity:

**85 %**

Storage Buffer:

**50 mM Tris-HCl pH 7.5, 270 mM Sucrose, 150 mM NaCl, 0.1 mM EGTA, 0.1 % 2-mercaptoethanol, 0.02 % Brij-35, 1 mM benzamidine, 0.2 mM PMSF**

Storage Temperature:

**-70 °C**

Theoretical PI:

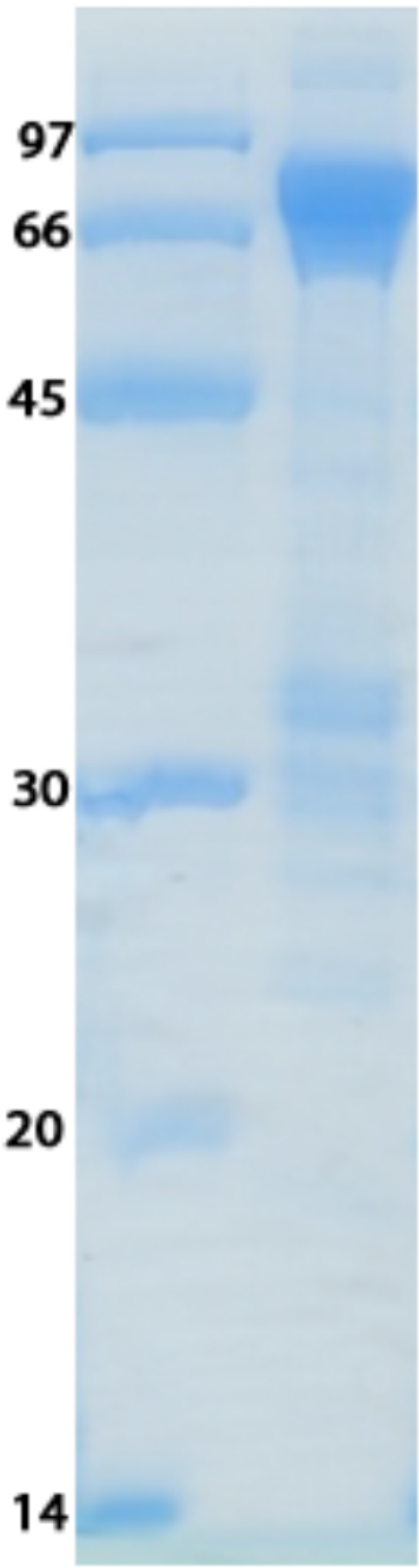
**8.56**

Gel Information :

Gel Image 1:



University  
of Dundee



Native Sequence:

**Amino acids M1 – K415 (end) of human CSNK1G2. Residue M232 of the fusion protein is equivalent to M1 of the native enzyme. The GST tag is located at residues 1 – 220.**

Protease Cleavage:

**PreScission (LEVLFQGP) residues 221 - 229**

Cloning Sites:

**BamH1 and Not1 sites of pGEX 6P-1**

Price per aliquot (100µg):

**£110.00**

