

ABL (118 - 535)

Catalog Number (DU Number):
DU5578

Accession:
NM_005157

Expression
bacteria

Terminus and Tag:
N-Term GST Uncleaved

Purification Method:
GSH Sepharose

Assay Buffer:
50 mM Tris-HCl pH 7.5, 0.1 % 2-mercaptoethanol, 0.1 mM EGTA, 10 mM MgAc

Assay Substrate:
ABLtide [EAIYAAPFAKKK], Final concentration: 300 ?M

Calculated Molecular Mass:
Mono-Isotopic Mass: 74,424.49
Average Mass: 74,472.32

Purity:
>80 %

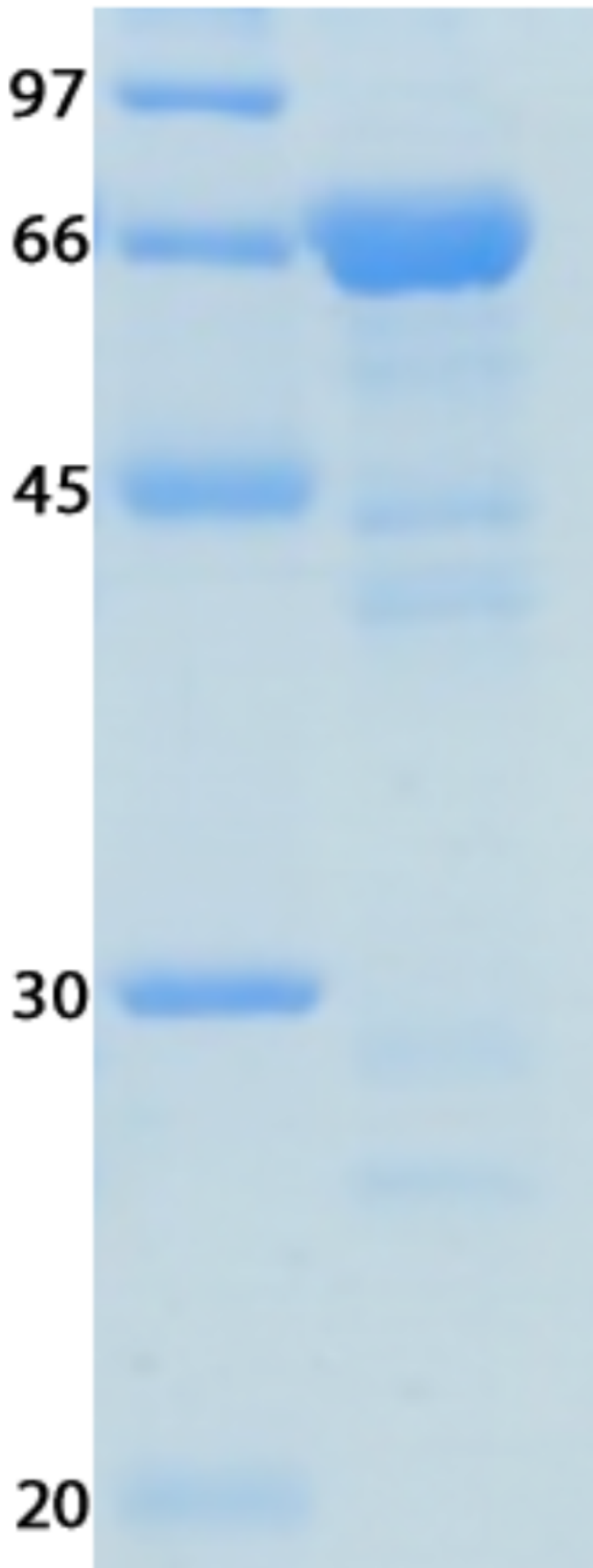
Storage Buffer:
50 mM Tris-HCl pH 7.5, 150 mM NaCl, 270 mM sucrose, 0.1 mM EGTA, 0.1 % 2-mercaptoethanol, 0.03 % Brij-35, 1 mM benzamidine, 0.2 mM PMSF

Storage Temperature:
-70 °C

Theoretical PI:
6.00

Gel Information :

Gel Image 1:



Native Sequence:

Amino acids P118 – S535 of human ABL1. [Full length protein ends at residue R1130]. Residue P232 of the fusion protein is equivalent to P2 of the native enzyme. The GST tag is located at residues 1 – 220.

Protease Cleavage:

Proteolysis site (LEVLFQGP) at residues 221 - 228

Cloning Sites:

BamH1 and EcoR1 sites of pGEX-6P-1

Price per aliquot (100µg):

£110.00

