



## 14-3-3 eta (1 - 246)

Catalog Number (DU Number):

**DU8263**

Accession:

**NM\_003405**

Expression

**bacteria**

Terminus and Tag:

**N-Term 6His Uncleaved**

Purification Method:

**Ni<sup>2+</sup>-NTA agarose**

Calculated Molecular Mass:

**Mono-Isotopic Mass: 31, 742.58**

**Average Mass: 31, 762.62**

Purity:

**>85 %**

Storage Buffer:

**25 mM Hepes pH 7.5, 50 % glycerol, 1 mM DTT, 0.2 mM PMSF, 1 mM Benzamidine.**

Storage Temperature:

**-20 °C**

Theoretical PI:

**5.3**

Gel Information :

**Gel Image 1:**

97

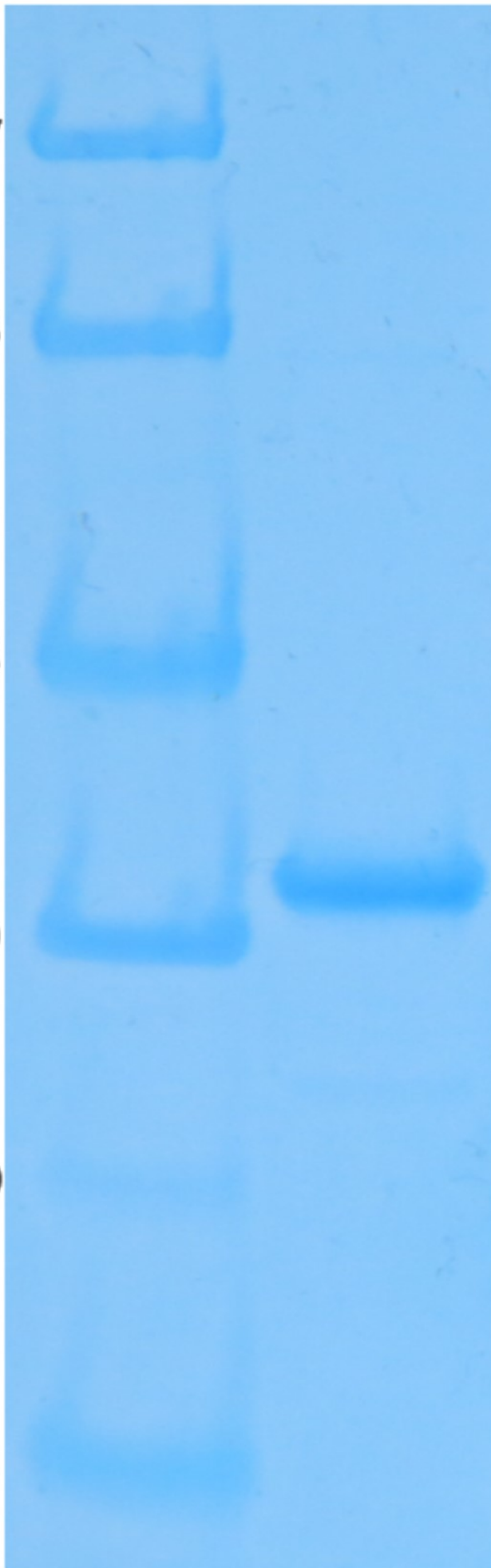
66

45

30

20

14



Native Sequence:

**Amino acids M1 – N246 (end) of human 14-3-3 eta. Residue M35 of the fusion protein is equivalent to M1 of the native protein. The His(6) tag is located at residues 5 – 10.**

Protease Cleavage:

**Thrombin (LVPRGS) between residues 14 - 19**

Cloning Sites:

**BamH1 and Not1 of pET 28a**

Price per aliquot (100µg):

**£110.00**

