

ABIN2 (1 - 429) D309N L327P

Catalog Number (DU Number):

DU8640

Accession:

NM_024309.3

Expression

bacteria

Terminus and Tag:

N-Term GST Uncleaved

Purification Method:

GSH Sepharose

Calculated Molecular Mass:

Mono-Isotopic Mass: 75,497.12

Average Mass: 75,534.75

Purity:

>80 %

Storage Buffer:

50 mM Tris-HCl pH 7.5, 270 mM Sucrose, 150 mM NaCl, 0.1 mM EGTA, 0.1 % 2-mercaptoethanol, 0.02 % Brij-35, 1 mM benzamidine, 0.2 mM PMSF

Storage Temperature:

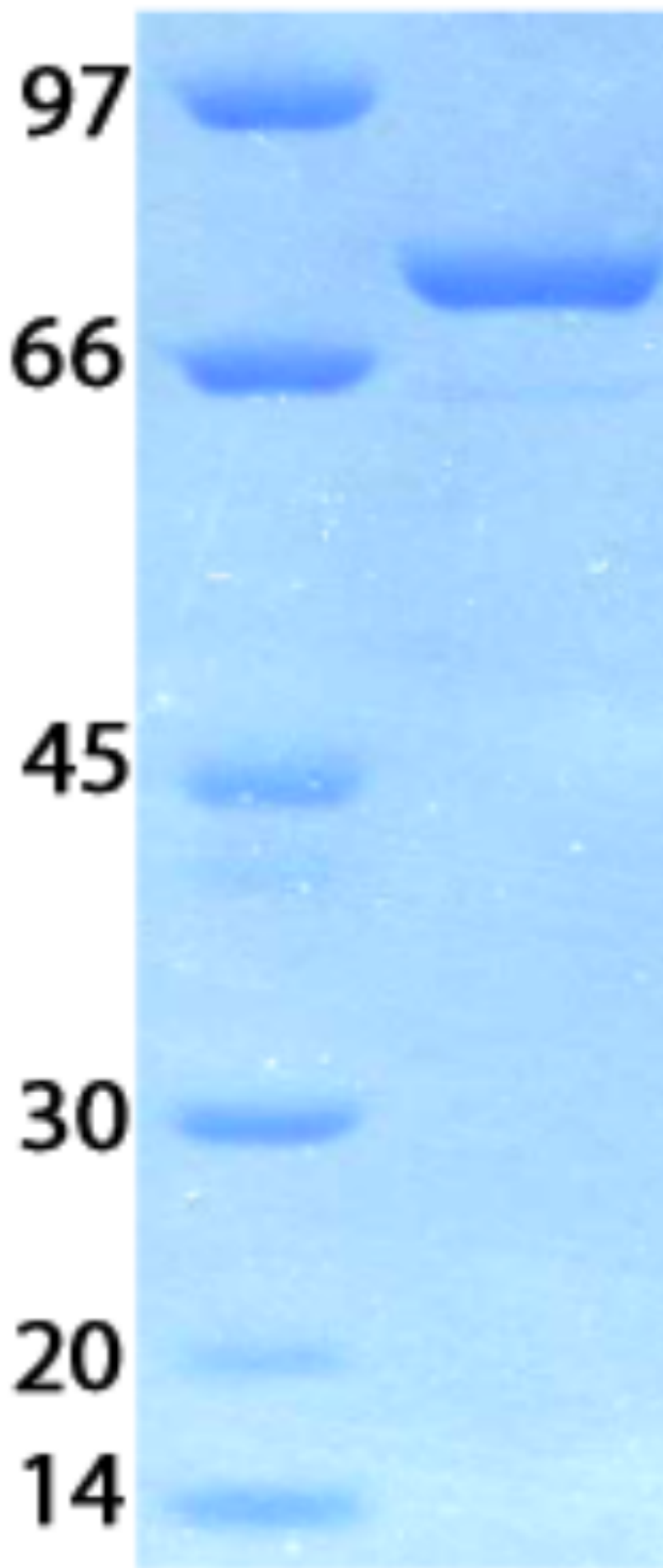
-70 °C

Theoretical PI:

6.00

Gel Information :

Gel Image 1:



Native Sequence:

Amino acids M1 – Q429 (end) of human ABIN2. Residue M232 of the fusion protein is equivalent to M1 of the native enzyme. The GST tag is located at residues 1 – 220. The protein has a D309N and an L327P mutation. Residue D309 is equivalent to residue N540 of the fusion protein and residue L327 is equivalent to P558.

Protease Cleavage:

PreScission (LEVLFQGP) residues 221 - 228

Cloning Sites:

BamH1 and Not1 sites of pGEX6P-1

Price per aliquot (100µg):

£110.00