

## PINK

Full Name:

**PINK1 (175 - 250 human)**

Long Name Text:

**PTEN induced putative kinase 1**

Immuno Sequence:

**GST-PINK1 (175 - 250 human) [DU 34557]**

DU Number of Antigen:

**DU34557**

Sheep No:

**S085D**

Monoclonal/Polyclonal:

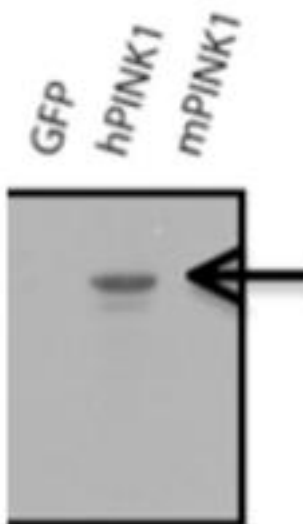
**Polyclonal**

Purification Method:

**Affinity purified against recombinant protein GST-PINK1 (175 – 250) S085D and then depleted against GST.**

Gel Image:

### Immunoblotting:



***HEK293 cells were either transfected with GFP empty vector, GFP-PINK1 (125-end mouse) or GFP-PINK1 (125-end human). 10 ug of cell extract was subjected to SDS- Page analysis before being transferred to nitrocellulose membrane and immunoblotted with anti-PINK1 S085D.***

Publication:

[PINK1 is activated by mitochondrial membrane potential depolarization and stimulates PARKIN E3 ligase activity by phosphorylating Serine 65](#)

Price per aliquot (100µg):

**£110.00**



University  
of Dundee