



LRRK2

Full Name:

LRRK2 phospho Ser 935

Long Name Text:

Leucine-rich repeat kinase 2

Immuno Sequence:

NLQRHSNS*LGPIFDH [residues 928 - 942 of human]

Phosphopeptide:

NLQRHSNSLGPIFDH [residues 928 - 942 of human]

Sheep No:

S814C

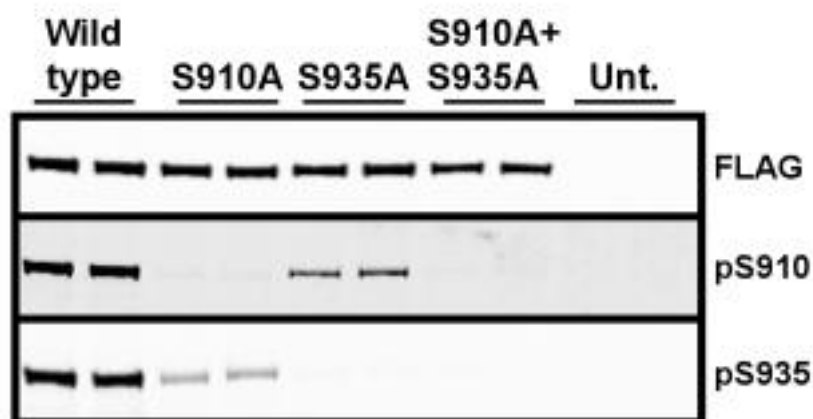
Monoclonal/Polyclonal:

Polyclonal

Purification Method:

Affinity purified against phospho specific peptide.

Gel Image:



Publication:

[Inhibition of LRRK2 kinase activity leads to dephosphorylation of Ser\(910\)/Ser\(935\), disruption of 14-3-3 binding and altered cytoplasmic localization.](#)

Price per aliquot (100µg):

£110.00