



## BTBD12 (SLX4)

Full Name:

**BTBD12 (1266-end mouse)**

Long Name Text:

**BTB (POZ) domain containing 12**

Immuno Sequence:

**GST-BTBD12 (1266-end mouse) [DU 19681]**

Phosphopeptide:

**GST-BTBD12 (1266-end mouse) [DU 19681]**

DU Number of Antigen:

**DU19681**

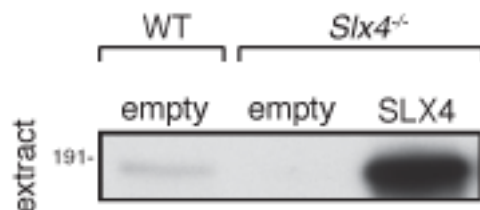
Sheep No:

**S819C**

Monoclonal/Polyclonal:

**Polyclonal**

Gel Image:



**25 ug of whole cell extract from wildtype MEFs, SLX4 null MEFs or SLX4 null MEFs complemented with wildtype SLX4 were subjected to SDS-Page, before being immunoblotted with 0.2 ug/ml of anti-SLX4 (1266-end mouse) antibody.**

Price per aliquot (100µg):

**£110.00**