



## PINK

Full Name:

**PINK (125 - end)**

Long Name Text:

**PTEN induced putative kinase 1**

Immuno Sequence:

**MBP-PINK (125 - end) [DU 17108]**

DU Number of Antigen:

**DU17108**

Sheep No:

**S514C**

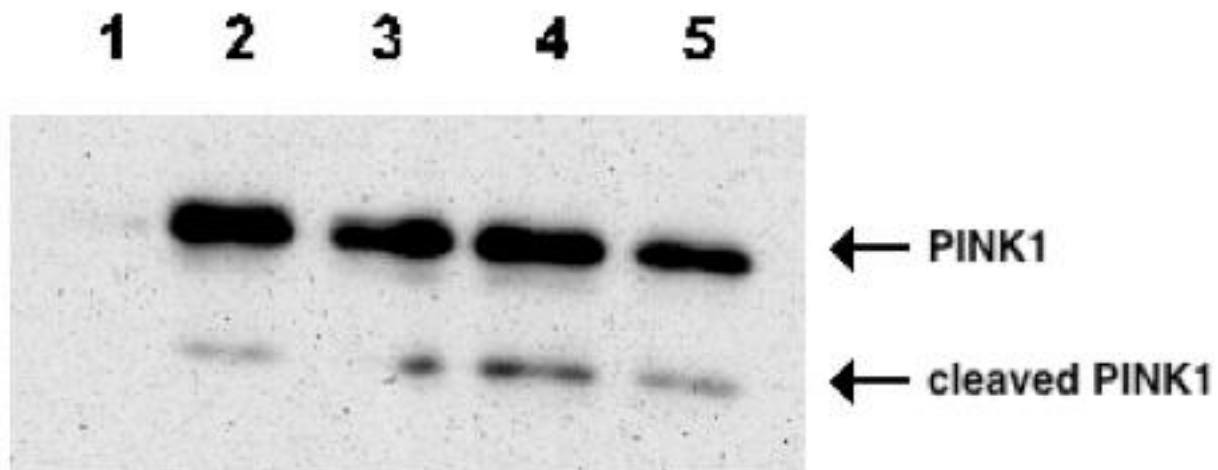
Monoclonal/Polyclonal:

**Polyclonal**

Purification Method:

**Affinity purified against MBP-PINK1 (125-end).**

Gel Image:



*PINK1 was immunoprecipitated from 1mg HEK 293 cellular extracts over-expressing human wildtype PINK1. Immunoprecipitates were performed using 5?g of pre-immune serum covalently coupled to protein G sepharose (lane 1); 5?g anti-PINK1 S688B antibody covalently coupled to protein G sepharose (lane 2); 5?g anti-PINK1 S460C (2nd bleed) antibody covalently coupled to protein G sepharose (lane 3); 5?g anti-PINK1 S460C (3rd bleed) antibody covalently coupled to protein G sepharose (lane 4) or 5?g anti-PINK1 S514C antibody covalently coupled to protein G sepharose (lane 5). Immunoprecipitates were subjected to SDS-PAGE analysis before being transferred to nitrocellulose membrane and immunoblotted with anti-PINK1 S460C antibody at 1 ?g/ml overnight at 4°C. Binding of the primary antibody was detected using rabbit*

***peroxidase conjugated anti- sheep IgG antibody (1 in 2500 dilution) and enhanced chemiluminescence.***

Price per aliquot (100µg):  
**£110.00**

