

## GFAT1

Full Name:

**GFAT1 phospho Ser 243**

Long Name Text:

**Glutamine-fructose-6-phosphate transaminase 1**

Immuno Sequence:

**RVDS\*TTCLFPVE [residues 240 - 251 of human]**

Phosphopeptide:

**RVDSTTCLFPVE [residues 240 - 251 of human]**

Sheep No:

**S343C**

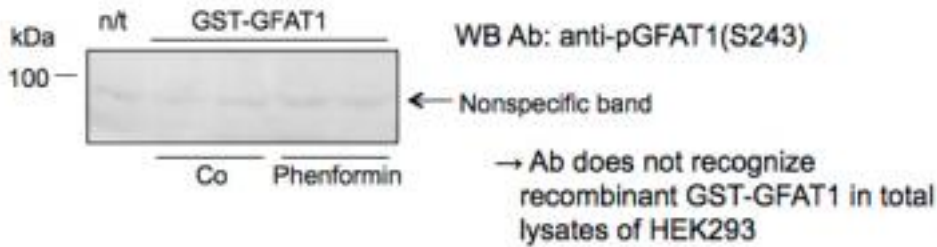
Monoclonal/Polyclonal:

**Polyclonal**

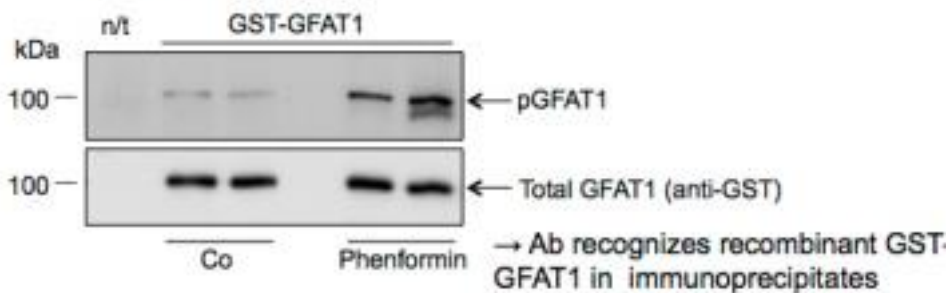
Gel Image:

## Characterization of anti-pGFAT1(Ser243) Ab (S343C, 3<sup>rd</sup> bleed, phosphopeptide column)

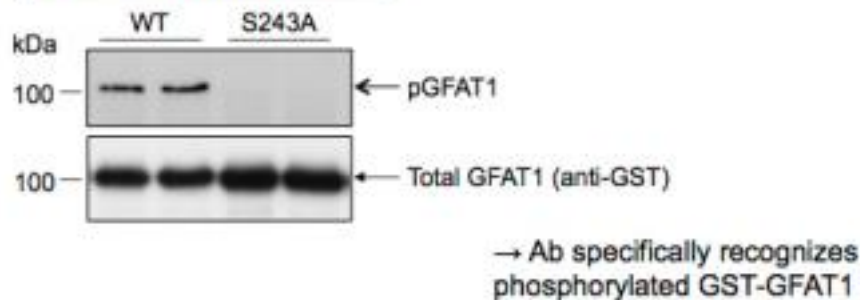
### HEK293 total lysates



### HEK293/IP: anti-GST Ab



### HEK293/IP: anti-GST Ab

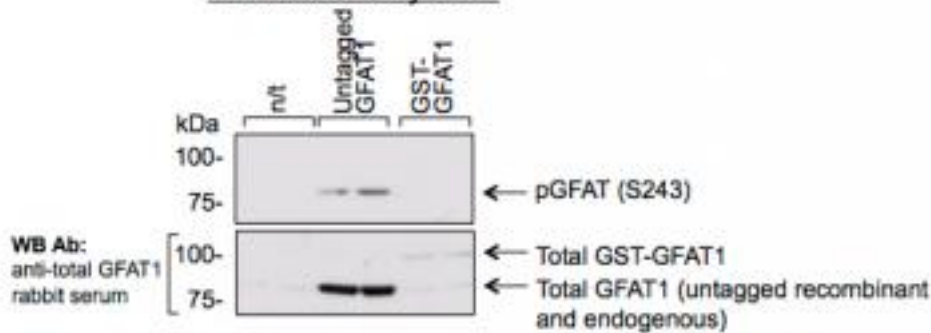


D. Zibrova

**WB Conditions:** Blocking: 5% milk in TBS/0.1% Tween 20, 60 min, RT, rocking platform pGFAT Ab (3<sup>rd</sup> bleed): 1 µg/ml in 5% milk in TBS/0.1% Tween 20 plus non-phosphopeptide: 10 µg/ml Incubate on a screw platform for Falcon tubes for overnight, 4°C Washing: 3x10 min with TBS/0.1% Tween, rocking platform Secondary Ab: anti-sheep HRP-labeled IgG (Pierce), 1:3000 in 5% milk in TBS/0.1% Tween 20, 1h, RT, rocking platform Hemiluminescence detection: ECL Western Blotting Detection Reagents (Amersham, GE Healthcare, #RPN2106) NB! For detection endogenous pGFAT1 the only difference in protocol was a use of 1:5000 dilution for the secondary antibody.

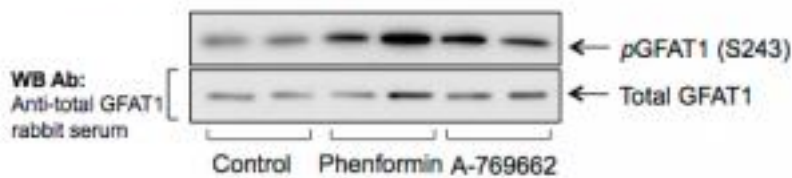
## Characterization of anti-pGFAT1(Ser243) Ab (S343C, 3<sup>rd</sup> bleed, phosphopeptide column)

### HEK293 total lysates

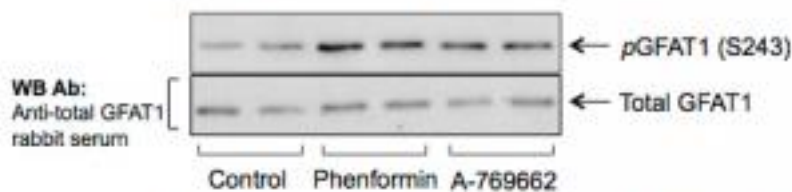


→ In total lysates, anti-pGFAT1 (S243) Ab recognizes only highly expressed untagged human recombinant GFAT1, but not endogenous or moderately expressed GST-GFAT1

### HEK293/IP: anti-total GFAT1 rabbit serum



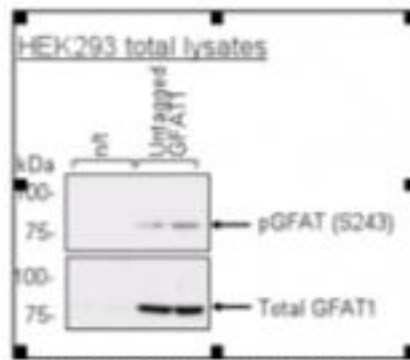
### MEFs/IP: anti-total GFAT1 rabbit serum



→ Anti-pGFAT1 (S243) Ab recognizes endogenous GFAT1 immunoprecipitated from a range of cellular systems

D. Zibrova

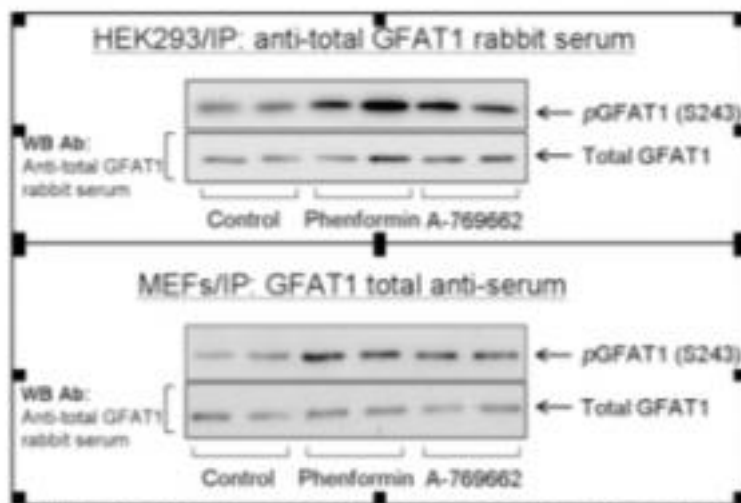
Immuno Blotting:



Does it recognise endogenous protein without immunoprecipitation: Ab does not recognize endogenous GFAT1 in total lysates of HEK293

Concentration used: 1  $\mu$ g/ml

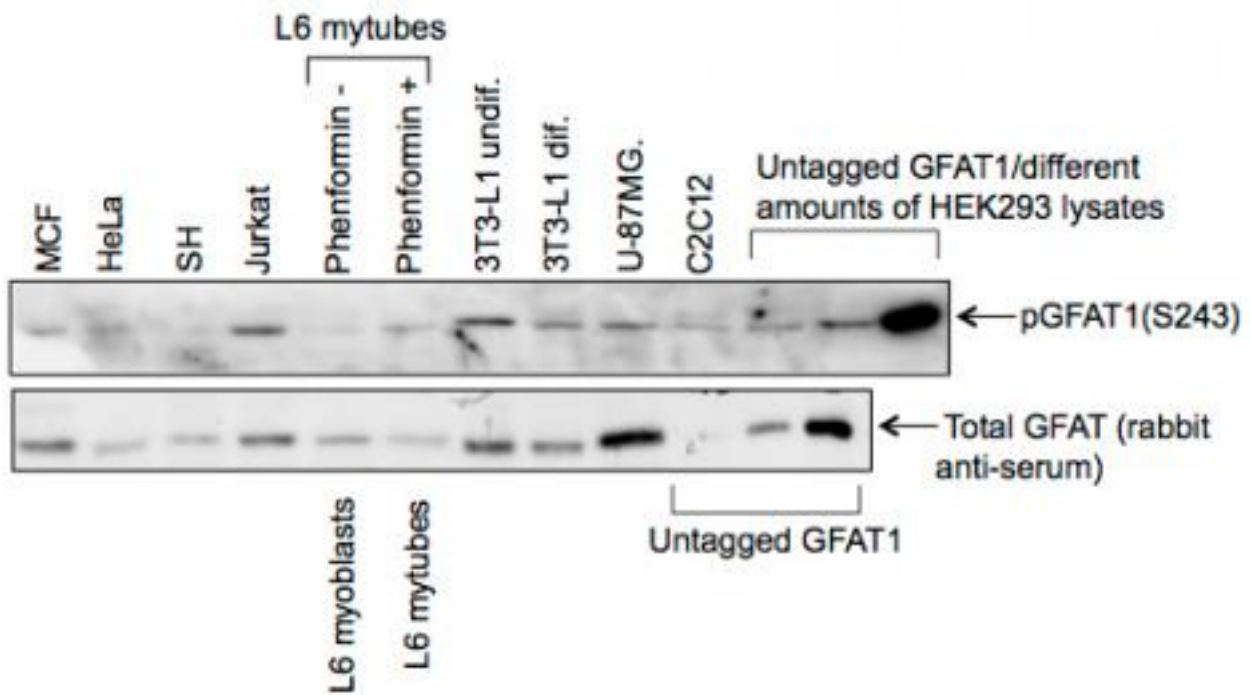
Immuno blotting after Immunoprecipitation:



Does it immuno blot only after immunoprecipitation: Ab recognizes endogenous GFAT1 immunoprecipitated from a range of cellular systems.

Concentration used for immuno blotting: 1  $\mu$ g/ml

Different cell types/total lysates (20 µg/well)



*In total lysates of a range of cell types with decent GFAT expression, anti- pGFAT1 Ab readily recognizes a protein with molecular weight corresponding to endogenous GFAT1. However, for more confidence and better quality of pictures, immunoprecipitation of GFAT is recommended.*

Price per aliquot (100µg):  
**£110.00**

