

GFAT1

Full Name:

GFAT1 (620 - 636)

Long Name Text:

Glutamine-fructose-6-phosphate transaminase 1

Immuno Sequence:

CDKEDTETIKNTKRTIK [residues 620 - 636 of human]

Sheep No:

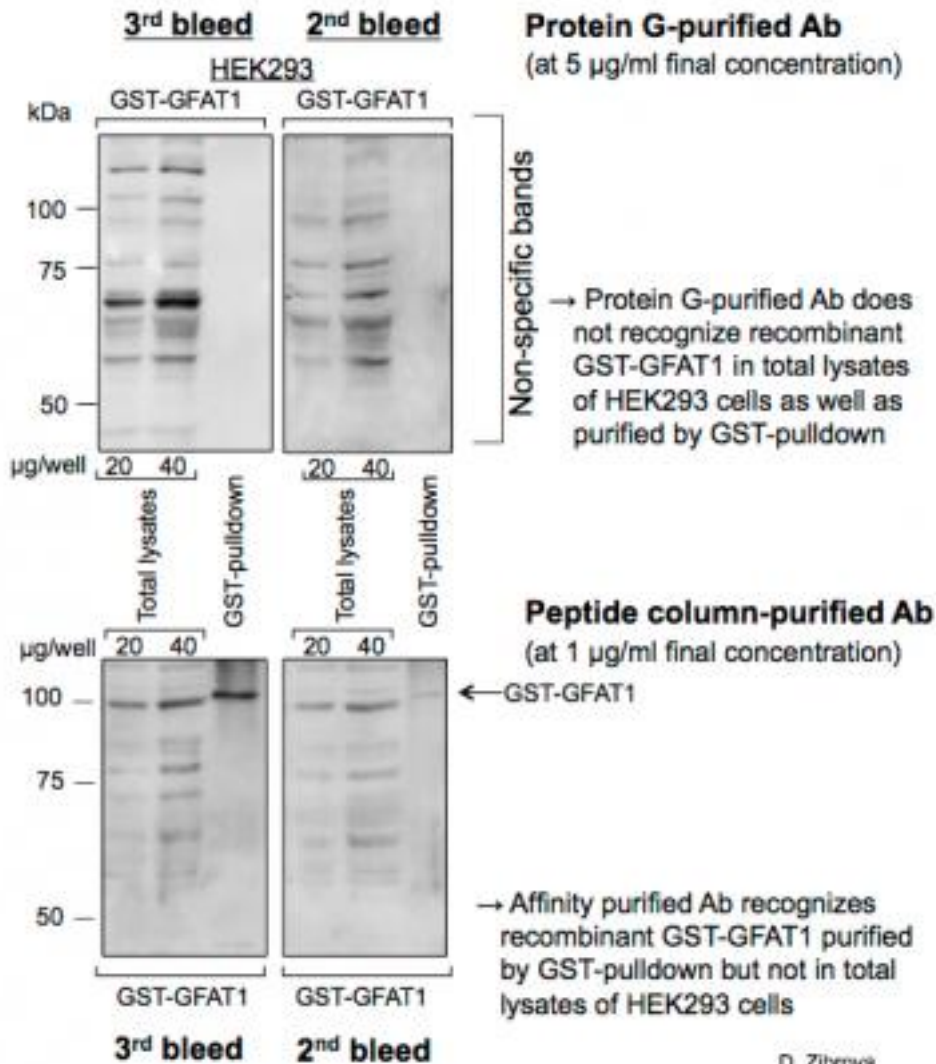
S373C

Monoclonal/Polyclonal:

Polyclonal

Gel Image:

Characterization of anti-total GFAT1 Ab (peptide, S373C)/application: WB

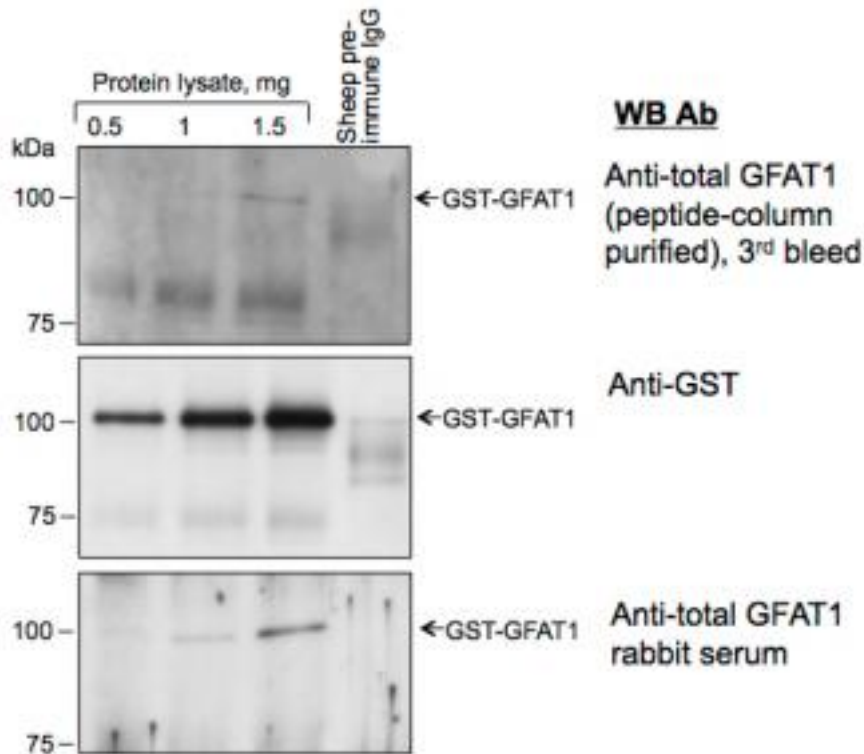


D. Zibrova

WB Conditions: Blocking: 5% milk in TBS/0.1% Tween 20, 60 min, RT, rocking platform. GFAT Ab (3rd or 2nd bleed): 1 µg/ml in 5% milk in TBS/0.1% Tween 20. Incubate on a screw platform for Falcon tube for overnight, 4°C. Washing: 3x10 min with TBS/0.1% Tween, rocking platform. Secondary Ab: anti-sheep HRP-labeled IgG (Pierce), 1:3000 in 5% milk in TBS/0.1% Tween 20, 1h, RT, rocking platform. Hemiluminescence detection: ECL Western Blotting Detection Reagents (Amersham, GE Healthcare, #RPN2106).

Characterization of anti-total GFAT1 Ab (peptide, S373C)/application: IP

HEK293/IP: anti-total GFAT1 (peptide column-purified), 3rd bleed (3 µg/sample)



→ 3rd bleed of S373C is suitable for immunoprecipitation of overexpressed GFAT1

→ At the conditions tested, Ab did not immunoprecipitate endogenous GFAT1

D. Zibrova

IP Conditions: Cell lysate containing recombinant GFAT1: 1-1.5 mg (top volume with lysis buffer up to 500 µl). GFAT1 Ab (3rd bleed): 3 µg/lysate. 50% Proten G-sepharose: 10 µl/lysate. Incubate for 2h on a rotating wheel, 4°C. Spin at 6000 rpm, 1 min. Wash twice with Lysis buffer + 0.5 M NaCl and twice with Buffer A, recovering beads by spinning at 6000 rpm, 1 min between washings. Add equal volume of 2x sample buffer +DTT and boil off any bound to the beads proteins at 95°C for 5 min. Spin at 13000 rpm, 5 min. Analyze supernatants by SDS-PAGE and Western blot analysis.

Price per aliquot (100µg):
£110.00