



BCR

Full Name:

BCR (1207 - 1227)

Long Name Text:

Breakpoint cluster region

Immuno Sequence:

QLEAIPAPDSKRQSILFSTEV [residues 1207 - 1227 of human]

Phosphopeptide:

QLEAIPAPDSKRQSILFSTEV [residues 1207 - 1227 of human]

Sheep No:

S484C

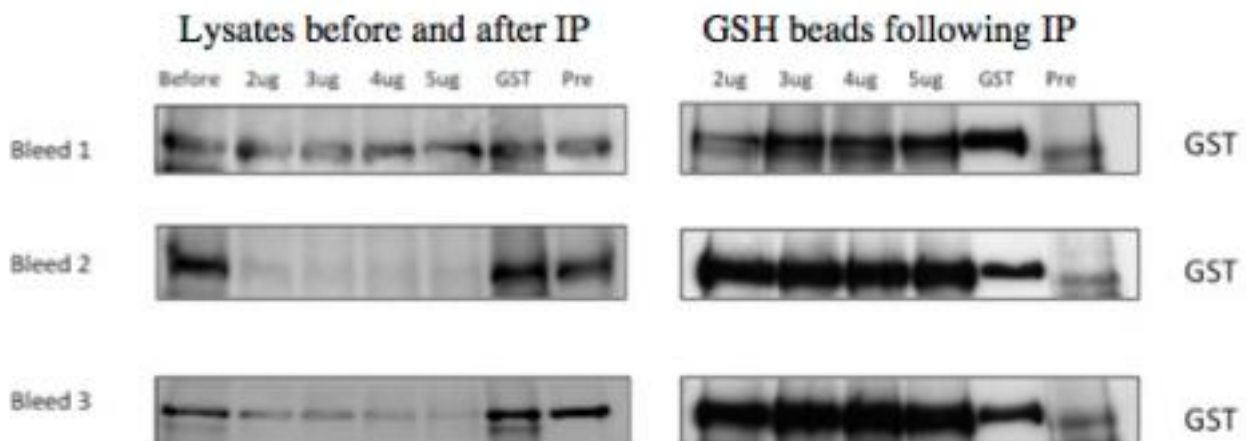
Monoclonal/Polyclonal:

Polyclonal

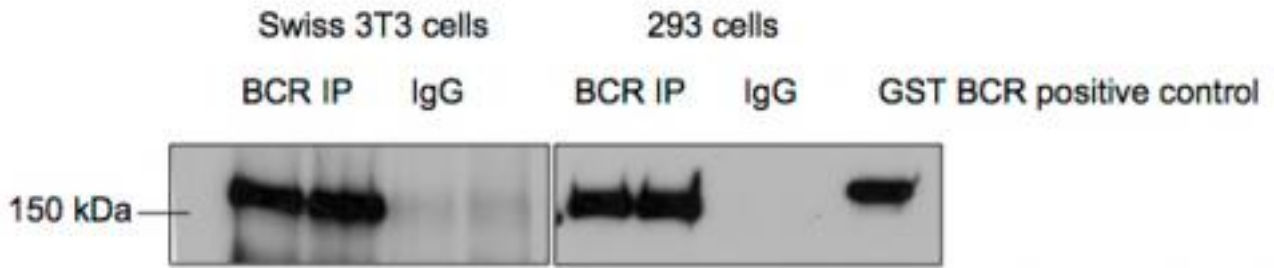
Purification Method:

Affinity purified against peptide.

Gel Image:



GST-BCR was transfected into HEK 293 cells and was immunoprecipitated from 2 mg of cellular lysate using different amounts (as indicated) of anti-BCR (1207 – 1227), pre- immune serum or GSH-Sepharose. The immunoprecipitates were subjected to SDS-Page transferred to nitrocellulose and immunoblotted with anti-GST. Binding of the primary antibody was detected using rabbit peroxidase conjugated anti- sheep IgG antibody (1 in 10, 000 dilution, Pierce) followed by enhanced chemiluminescence (ECL, Amersham).



Endogenous BCR was immunoprecipitated from 2 mg of HEK 293 and mouse Swiss 3T3 cellular lysates using 2 ug of anti-BCR (1207 – 1227). The immunoprecipitates were subjected to SDS-Page transferred to nitrocellulose and immunoblotted with anti-BCR [cell signalling, cat no: 3902]. Detection of the primary antibody was performed according to manufacturer's instructions.

Price per aliquot (100µg):
£110.00

