



AS160

Full Name:

AS160 phospho Ser 666

Long Name Text:

AKT substrate 160 kDa

Immuno Sequence:

CAQGVRS*PLLRQS [residues 661 - 672 of human]

Phosphopeptide:

CAQGVRSPLLRQS [residues 661 - 672 of human]

Aliases

TBC1D4

Sheep No:

S924B

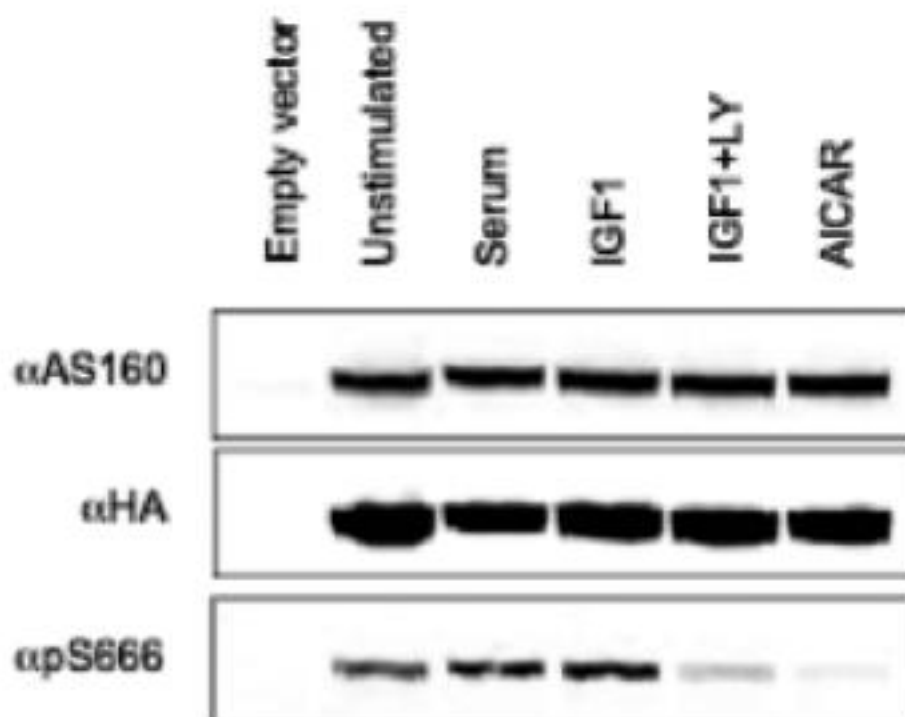
Monoclonal/Polyclonal:

Polyclonal

Purification Method:

Affinity purified against phospho peptide.

Gel Image:



HEK293 cells transfected with HA-AS160A were stimulated as indicated. Crude lysates (60 μ g)

were probed for binding to the antibodies as indicated along the left hand side and visualised using secondary antibodies that were detected using the Odyssey Infrared Imaging System (LI-COR Inc.). The cells transfected with empty vector were serum starved before harvesting.

Publication:

[Regulation of multisite phosphorylation and 14-3-3 binding of AS160 in response to IGF-1, EGF, PMA and AICAR](#)

Price per aliquot (100µg):

£110.00