



AS160

Full Name:

AS160 phospho Thr 642

Long Name Text:

AKT substrate 160 kDa

Immuno Sequence:

CRRRAHT*FSHPPS [residues 637 - 648 of human]

Phosphopeptide:

CRRRAHTFSHPPS [residues 637 - 648 of human]

Aliases

TBC1D4

Sheep No:

S887B

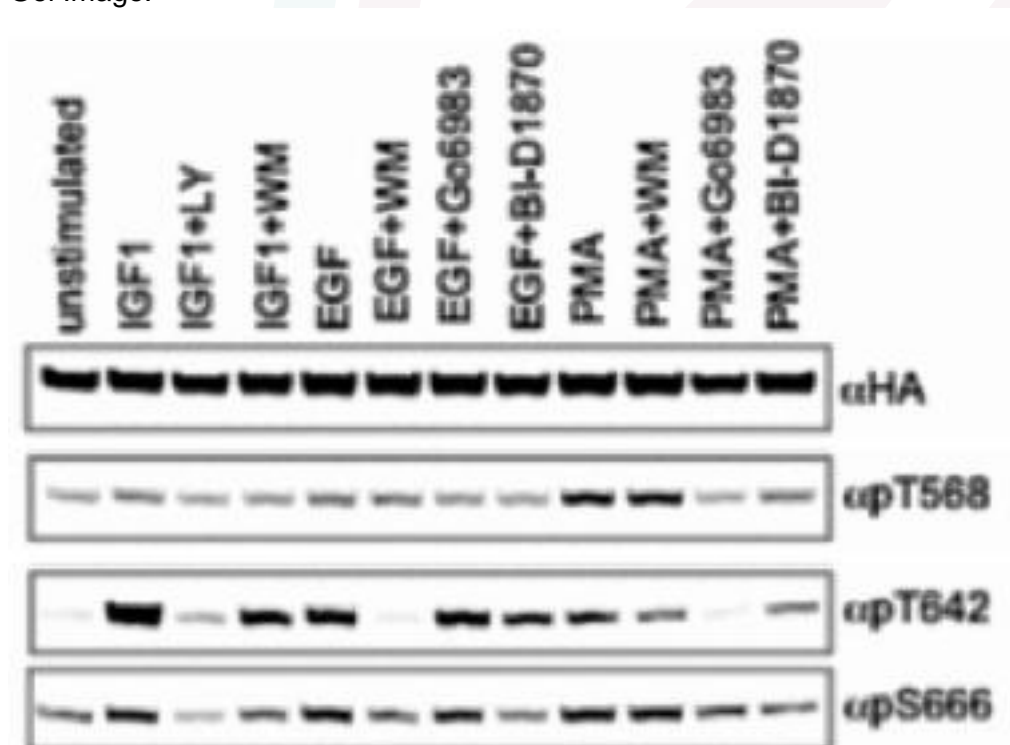
Monoclonal/Polyclonal:

Polyclonal

Purification Method:

1 ?g/ml for immuno blotting. Include the non-phosphorylated form of the peptide immunogen at 10 ?g/ml to the diluted antibody.

Gel Image:



HEK293 cells transfected with HA-AS160A were stimulated as indicated. Crude lysates (60 µg) were probed for binding to the antibodies as indicated along the left hand side and visualised using secondary antibodies that were detected using the Odyssey Infrared Imaging System (LI-COR Inc.). The cells transfected with empty vector were serum starved before harvesting.

Publication:

[Regulation of multisite phosphorylation and 14-3-3 binding of AS160 in response to IGF-1, EGF, PMA and AICAR.](#)

Price per aliquot (100µg):

£110.00