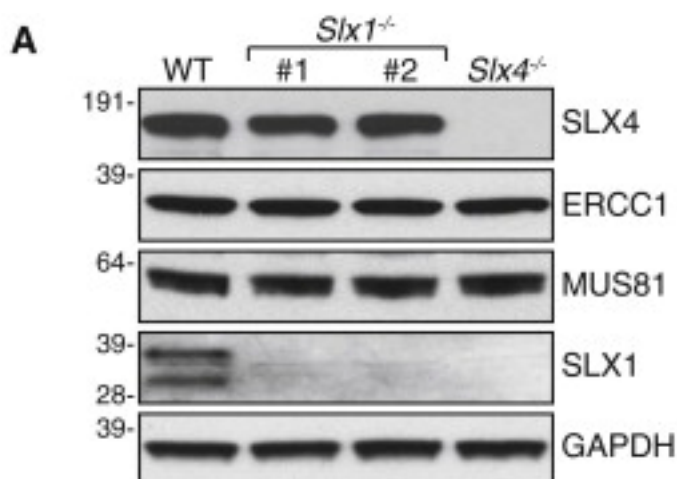


## Antibody Datasheet

<b>Product description:-</b>	Anti-ERCC1 (1 – 200 mouse)
<b>Antigen:-</b>	GST-ERCC1 (1 – 200 mouse) [DU 37165]
<b>Sheep Number:-</b>	S161D
<b>Formulation:-</b>	Phosphate Buffered Saline
<b>Storage temperature:-</b>	–20 °C
<b>Purification Method:-</b>	Affinity purified against recombinant protein GST-ERCC1 (1 – 200 mouse) and then depleted against GST
<b>Working Concentration:-</b>	For immunoblotting use at 1 ug/ml

### Immunoblotting:



Western blot analysis of MEF extracts from wildtype (WT), *Slx1*<sup>-/-</sup> and *Slx4*<sup>-/-</sup> mice. Extracts were immunoblotted with Anti-SLX4 (1266 – end mouse) S819C, anti-ERCC1 (1-200 mouse) S161D, anti-MUS81 (1-200 mouse) S163D, anti-SLX1 (mouse) S778C and anti-GAPDH (14C10 cell signalling).

### Publication:

“Cooperative Control of Holliday Junction Resolution and DNA Repair by the SLX1 and MUS81-EME1 Nucleases.”

Castor D, Nair N, Declais, A-C, Lachaud C, Toth R, McCartney TJ, Lilley DMJ, Arthur JSC and Rouse J (2013). Mol Cell. Oct 24, 52(2), 221-233.