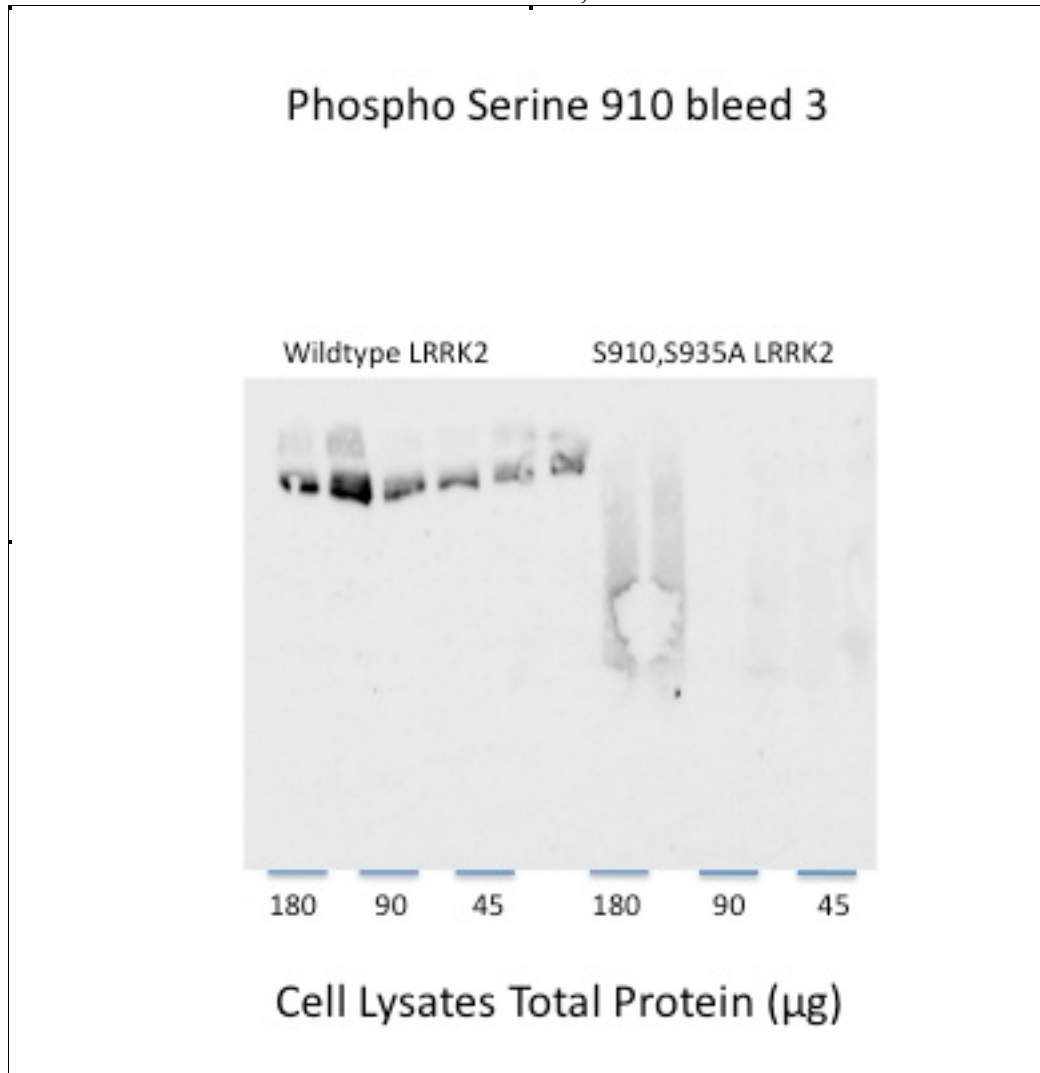


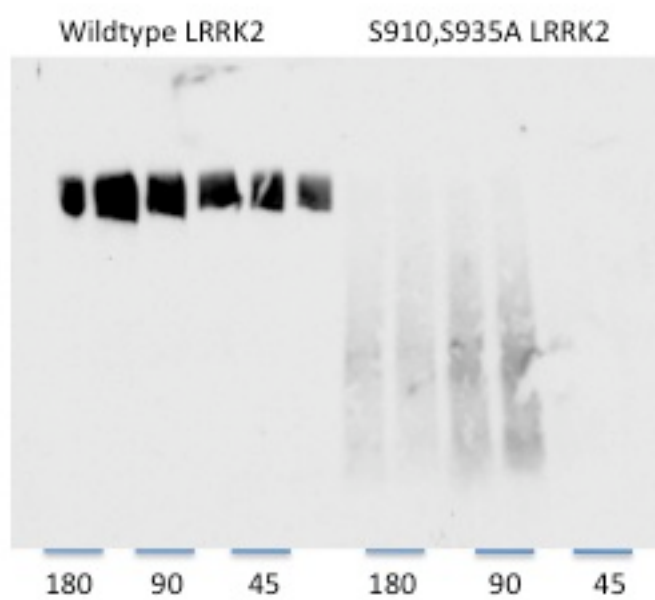
### S886C LRRK2 Ser 910

3<sup>rd</sup> and 4<sup>th</sup> bleeds

Antibody successfully recognises antigen in cell lysates from HEK-293 cells transfected with wildtype LRRK2 but does not recognise dephosphorylated antigen from HEK-293 cells transfected with S910A,S935A LRRK2. Blot Attached.



## Phospho Serine 910 bleed 4



Cell Lysates Total Protein ( $\mu\text{g}$ )