

Antibody QC data sheet

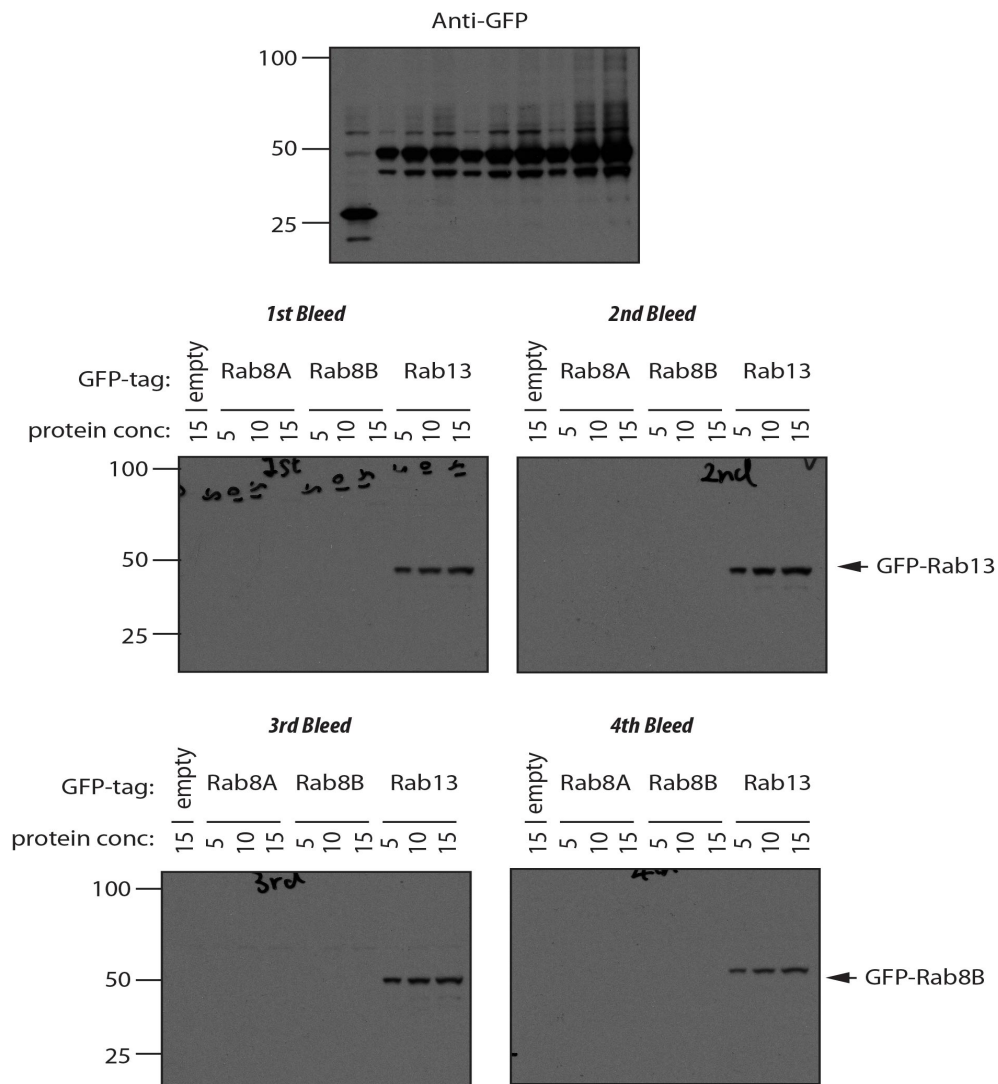
Name of antibody: Total Rab13 (Human)

Antigen: MBP-Rab13 [Du 43886]

Sheep Number: S806D

Bleed Number: 1st, 2nd, 3rd, and 4th bleeds

Working concentration: 1µg/ml



HeLa Flp-in Trex cells stably expressing GFP-empty, GFP-Rab8A, GFP-Rab8B and GFP-Rab13 were induced by Doxycycline (0.1µg/ml) for 24h. The indicated protein extracts were subjected to SDS-PAGE analysis before transferred to nitrocellulose membrane and immunoblotted with Anti-GFP antibody or anti-Rab13 antibodies (bleed 1-4) overnight. Binding of the primary antibody was detected using anti-sheep (1:10,000) and visualised with ECL.

Note: All bleeds detect overexpressed Rab13, but not endogenous.