

**ANTIBODIES S650C - WNK1 (2360 – 2383) [Programme Restart]**

1. Has this antibody been tested?

Yes:

2. Has a data sheet been generated?

Yes:

3. Does this antibody immunoblot 1-10ng of recombinant protein?

Unknown:

4. Does this antibody immunoblot endogenous proteins in cell extracts?

Yes:

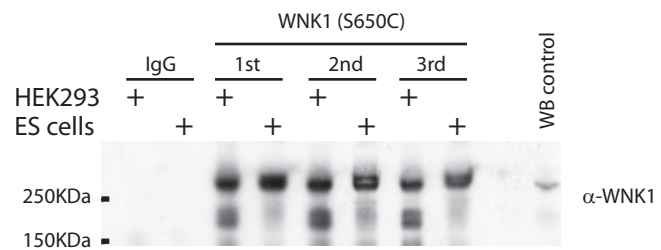
5. Does this antibody immunoprecipitate recombinant protein?

Unknown:

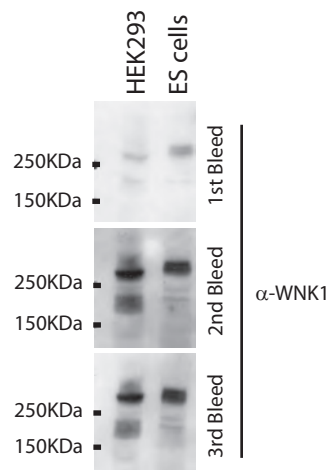
6. Does this antibody immunoprecipitate endogenous protein?

Yes:

A



B



**A.** Each bleed of the antibody was non-covalently coupled to protein G beads at a ratio of 1ug antibody to 1ul beads. 10ul of each of the beads were incubated with 500ug of either HEK293 or ES cell lysates for 1hr at 4C. The beads were subsequently washed 3 times with lysisbuffer containing 0.5M NaCl and 2 times with buffer A. The immunoprecipitated proteins were eluded with sample buffer and run on an 8% gel. The membrane was immunoblotted with a WNK1 antibody (S113C). **B.** 20ug of either HEK293 or ES cell lysates were run on an 8% gel and immunoblotted with either 1<sup>st</sup>, 2<sup>nd</sup> or 3<sup>rd</sup> bleed of the S650C WNK1 antibody at a concentration of 2ug/ml for 2hrs at RT.