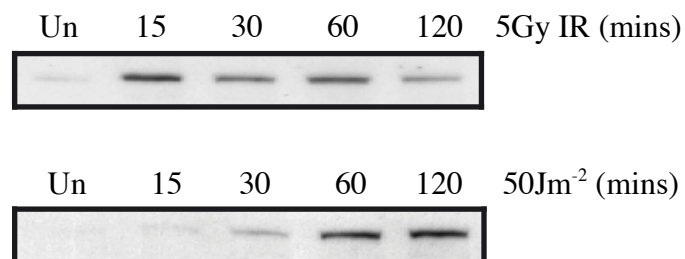


Antibody Datasheet

| | |
|--------------------------------|--|
| Product description:- | Anti-53BP1 phospho Ser 831 |
| Antigen:- | KKPVEQDSS*QPSLPL [residues 825 – 837 of human plus two additional N-terminal lysine residues, where * is phospho Serine] |
| Sheep Number:- | S627B |
| Bleed Number:- | Third Bleed |
| Concentration:- | 0.1 mg/ml |
| Formulation:- | Phosphate Buffered Saline |
| Storage temperature:- | -20 °C |
| Purification Method:- | Affinity purified against phospho specific peptide |
| Working Concentration:- | 1 μ g/ml for western blotting in the presence of 10 μ g/ml of the non-phosphorylated peptide |

Publication Reference:-

Unpublished – Therefore please treat this information as highly confidential



Phosphorylation detected in HEK293, HeLa and U2OS cells after treatment with ionising radiation (5Gy) or ultra-violet radiation (50 Jm⁻²). The antibody was incubated with the non-phosphorylated peptide (10 μ g/ml) for 30 mins before addition to the nitrocellulose membrane. The antibody was used at 1 μ g/ml in 5 % skimmed milk / TBS-Tween and incubated with the membrane for 2 hours at room temperature.

Binding of the primary antibody was detected using rabbit peroxidase conjugated anti-sheep IgG antibody (1 in 10, 000 dilution, Pierce) followed by enhanced chemiluminescence (ECL, Amersham).