

**Antibody Datasheet**

**Product description:-** Anti-53BP1 phospho Ser 166

**Antigen:-** KKAEDTASS\*QLGFGV  
[residues 160 – 172 of human plus two additional N-terminal lysine residues, where \* is phospho Serine]

**Sheep Number:-** S651B

**Bleed Number:-** Third Bleed

**Concentration:-** 0.29 mg/ml

**Formulation:-** Phosphate Buffered Saline

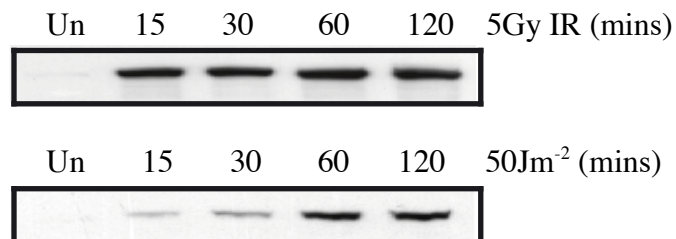
**Storage temperature:-** -20 °C

**Purification Method:-** Affinity purified against phospho specific peptide

**Working Concentration:-** 1  $\mu\text{g/ml}$  for western blotting in the presence of 10  $\mu\text{g/ml}$  of the non-phosphorylated peptide

**Publication Reference:-**

Unpublished – Therefore please treat this information as highly confidential



Phosphorylation detected in HEK293, HeLa and U2OS cells after treatment with ionising radiation (5Gy) or ultra-violet radiation (50 Jm<sup>-2</sup>). The antibody was incubated with the non-phosphorylated peptide (10  $\mu\text{g/ml}$ ) for 30 mins before addition to the nitrocellulose membrane. The antibody was used at 1  $\mu\text{g/ml}$  in 5 % skimmed milk / TBS-Tween and incubated with the membrane for 2 hours at room temperature.

Binding of the primary antibody was detected using rabbit peroxidase conjugated anti-sheep IgG antibody (1 in 10, 000 dilution, Pierce) followed by enhanced chemiluminescence (ECL, Amersham).