

Antibody Datasheet

Product description:- Anti-TAB3 phospho Thr 404

Antigen:- LYTATT*PPSSS
[where * is phospho Serine, residues 399 - 409 of human]

Sheep Number:- S902B

Bleed Number:- Second Bleed

Concentration:- 0.56 mg/ml

Formulation:- Phosphate Buffered Saline

Storage temperature:- -20 °C

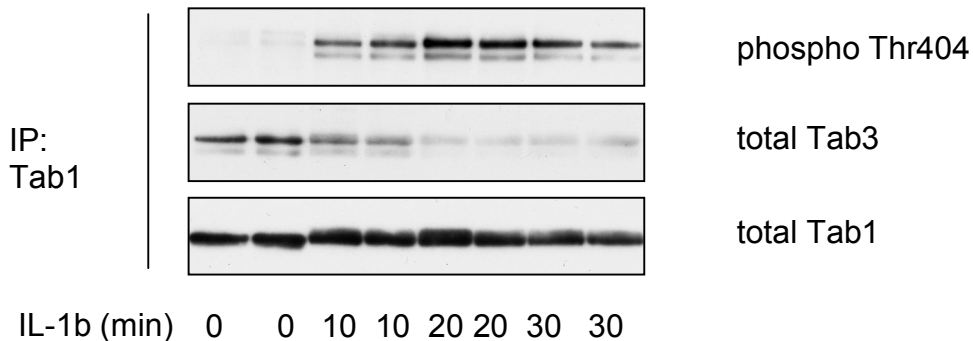
Purification Method:- Affinity purified against phospho peptide

Working Concentration:- 1 µg/ml for immuno blotting after immunoprecipitation
Include the non-phosphorylated form of the peptide immunogen at 10 µg/ml to the diluted antibody

Immunoprecipitation antibody, anti-TAB1 [S823A]
(5 µg per mg of lysate)

Publication Reference:-

Unpublished – Therefore please treat this information as highly confidential



HEK 293 ILR cells were stimulated with or without IL-1beta (5 ng/ml) for the times indicated. TAB3 was immunoprecipitated from 2 mg of cell lysate using 10 µg anti-TAB1 [S823A] antibody. The immunoprecipitate was subjected to SDS-Page analysis before being transferred to nitrocellulose membrane and immuno blotted with either anti-TAB1 [S823A], anti-TAB3 [S81B] or anti-TAB3 phospho Thr 404.

Binding of the primary antibody was detected using rabbit peroxidase conjugated anti-sheep IgG antibody (1 in 10, 000 dilution, Pierce) followed by enhanced chemiluminescence (ECL, Amersham).