

**Antibody Datasheet**

**Product description:-** Anti-TAB3 phospho Ser 506

**Antigen:-** KYQRSSS\*SGSDD  
[where \* is phospho Serine, residues 500 - 511 of human]

**Sheep Number:-** S903B

**Bleed Number:-** Second Bleed

**Concentration:-** 0.23 mg/ml

**Formulation:-** Phosphate Buffered Saline

**Storage temperature:-** -20 °C

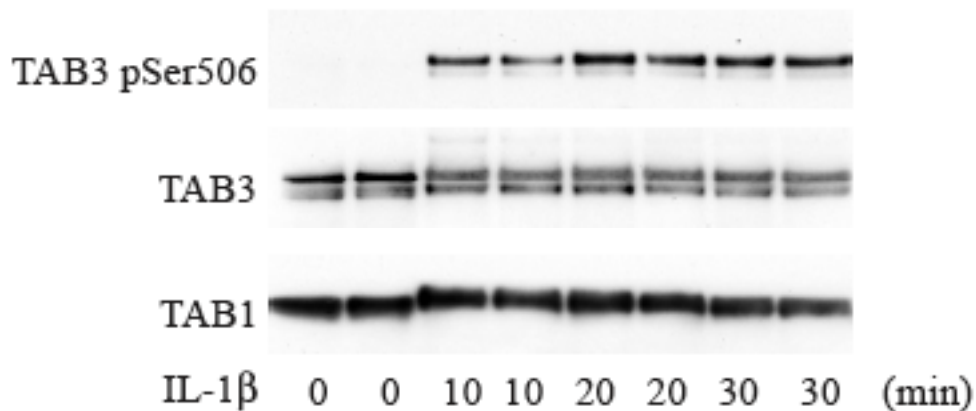
**Purification Method:-** Affinity purified against phospho peptide

**Working Concentration:-** 1 µg/ml for immuno blotting after immunoprecipitation  
Include the non-phosphorylated form of the peptide immunogen at 10 µg/ml to the diluted antibody

Immunoprecipitation antibody, anti-TAB1 [S823A]  
(5 µg per mg of lysate)

**Publication Reference:-**

Unpublished – Therefore please treat this information as highly confidential



HEK 293 ILR cells were stimulated with or without IL-1beta (5 ng/ml) for the times indicated. TAB3 was immunoprecipitated from 2 mg of cell lysate using 10  $\mu$ g anti-TAB1 [S823A] antibody. The immunoprecipitate was subjected to SDS-Page analysis before being transferred to nitrocellulose membrane and immuno blotted with either anti-TAB1 [S823A], anti-TAB3 [S81B] or anti-TAB3 phospho Ser 506.

Binding of the primary antibody was detected using rabbit peroxidase conjugated anti-sheep IgG antibody (1 in 10, 000 dilution, Pierce) followed by enhanced chemiluminescence (ECL, Amersham).