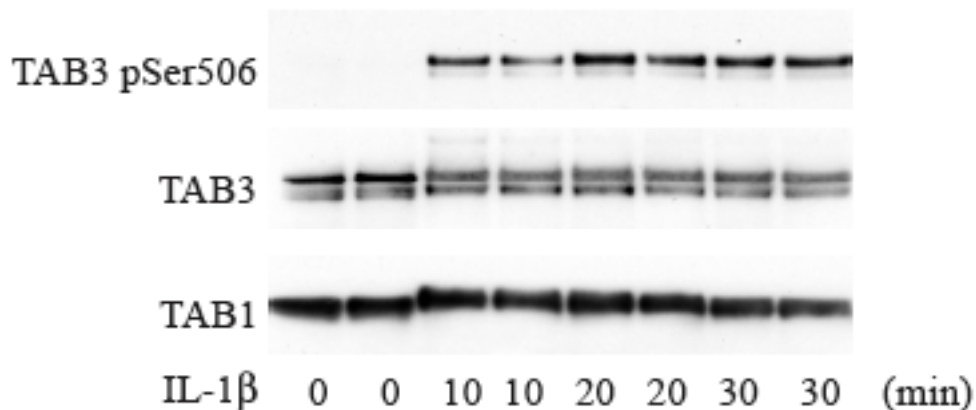


**Antibody Datasheet**

<b>Product description:-</b>	Anti-TAB3
<b>Antigen:-</b>	GST-TAB3 [DU 3033]
<b>Sheep Number:-</b>	S081A
<b>Bleed Number:-</b>	First Bleed
<b>Concentration:-</b>	0.25 mg/ml
<b>Formulation:-</b>	Phosphate Buffered Saline
<b>Storage temperature:-</b>	-20 °C
<b>Purification Method:-</b>	Affinity purified GST-TAB3 recombinant protein and then depleted against TAB1, TAB2 and GST
<b>Working Concentration:-</b>	1 $\mu$ g/ml for immuno blotting 1 $\mu$ g per 0.5 mg of cellular extract for immunoprecipitation

**Publication Reference:-**

Unpublished – Therefore please treat this information as highly confidential



HEK 293 ILR cells were stimulated with or without IL-1beta (5 ng/ml) for the times indicated. TAB3 was immunoprecipitated from 2 mg of cell lysate using 10  $\mu$ g anti-TAB1 [S823A] antibody. The immunoprecipitate was subjected to SDS-Page analysis before being transferred to nitrocellulose membrane and immuno blotted with either anti-TAB1 [S823A], anti-TAB3 [S81B] or anti-TAB3 phospho Ser 506.

Binding of the primary antibody was detected using rabbit peroxidase conjugated anti-sheep IgG antibody (1 in 10, 000 dilution, Pierce) followed by enhanced chemiluminescence (ECL, Amersham).