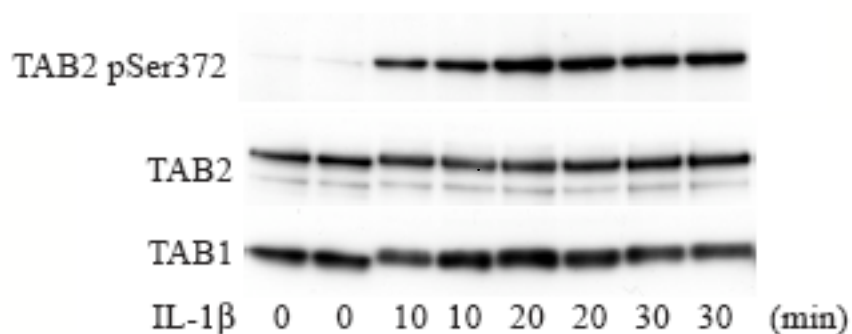


Antibody Datasheet

Product description:-	Anti-TAB2 phospho Ser 372
Antigen:-	YIAAS*PPNTD [where * is phospho Serine, residues 368 - 377 of human]
Sheep Number:-	S791B
Bleed Number:-	Second Bleed
Concentration:-	0.32 mg/ml
Formulation:-	Phosphate Buffered Saline
Storage temperature:-	-20 °C
Purification Method:-	Affinity purified against phospho peptide
Working Concentration:-	1 μ g/ml for immuno blotting after immunoprecipitation Include the non-phosphorylated form of the peptide immunogen at 10 μ g/ml to the diluted antibody Immunoprecipitation antibody, anti-TAB1 [S823A] (5 μ g per mg of lysate)

Publication Reference:-

Unpublished – Therefore please treat this information as highly confidential



HEK 293 ILR cells were stimulated with or without IL-1beta (5 ng/ml) for the times indicated. TAB2 was immunoprecipitated from 2 mg of cell lysate using 10 μ g anti-TAB1 [S823A] antibody. The immunoprecipitate was subjected to SDS-Page analysis before being transferred to nitrocellulose membrane and immuno blotted with either anti-TAB1 [S823A], TAB2 [S80B] or anti-TAB2 phospho Ser 372.

Binding of the primary antibody was detected using rabbit peroxidase conjugated anti-sheep IgG antibody (1 in 10, 000 dilution, Pierce) followed by enhanced chemiluminescence (ECL, Amersham).