

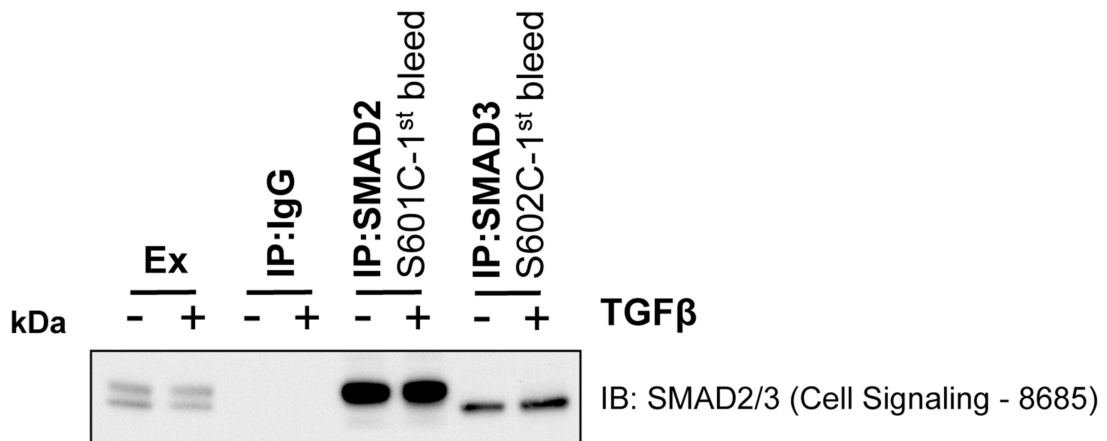
Antibody Datasheet

Product description:- Anti-SMAD2 (87 – 107)
Antigen:- LSTPNTIDQWDTTGLYSFSEQ
 [residues 87 - 107 of human]
Sheep Number:- S601C
Formulation:- Phosphate Buffered Saline
Storage temperature:- -20 °C
Purification Method:- Affinity purified against peptide immunogen

Working Concentration:-

For immunoprecipitation use 2 ug antibody per mg
 For immunoblotting use at 1 ug/ml after immunoprecipitation.

This SMAD2 antibody does not cross react with SMAD3



IP protocol:

1. Couple 2ug antibody coupled to 5ul packed Protein G-sepharose beads for 1h at 4oC in a shaking platform
2. Add the coupled beads to pre-cleared HaCaT extracts (1 mg protein total)
3. Wash 2X Lysis Buffer containing 0.5 M NaCl; 2X TE Buffer (TrisHCl pH7.5, 0.1 mM EGTA, 0.1% b-mercaptoethanol)
4. Reconstitute beads in 20ul TE buffer, add 5X SDS Sample buffer and boil for 5 min prior to SDS-PAGE