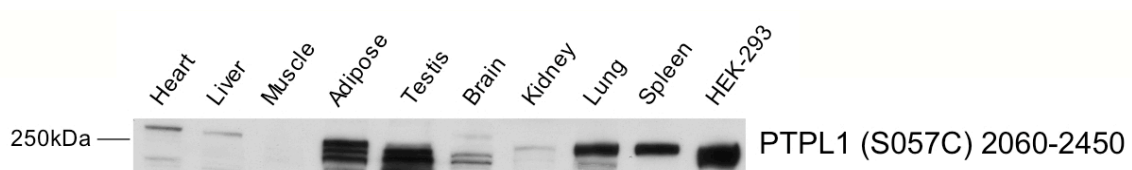


Antibody Datasheet

Product description:-	Anti-PTPL1 (2060 - 2450)
Antigen:-	GST-PTPL1 (2060 - 2450) [DU 10529]
Sheep Number:-	S057C
Bleed Number:-	First Bleed
Concentration:-	0.2 mg/ml
Formulation:-	Phosphate Buffered Saline
Storage temperature:-	-20 °C
Purification Method:-	Affinity purified against GST-PTPL1 (2060 - 2450) and then depleted against GST
Working Concentration:-	1 μ g/ml for immuno-blotting 1 μ g per 1 mg of cellular lysate for immunoprecipitation

Publication Reference:-

Not Published with this antibody



25 μ g of various mouse tissue lysates and HEK293 cell lysate were subjected to SDS-Page, transferred to nitrocellulose and immunoblotted with anti-PTPL1 (2060 - 2450) at 1 μ g/ml.

Binding of the primary antibody was detected using rabbit peroxidase conjugated anti-sheep IgG antibody (1 in 10, 000 dilution, Pierce) followed by enhanced chemiluminescence (ECL, Amersham).