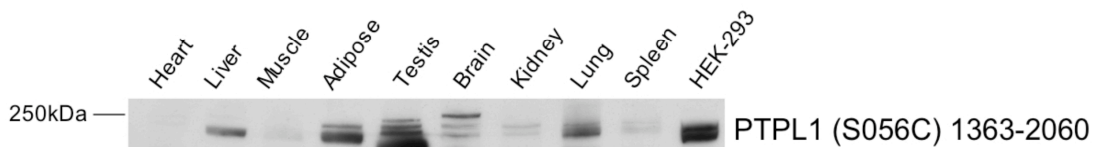


Antibody Datasheet

Product description:- Anti-PTPL1 (1363 – 2060)
Antigen:- GST-PTPL1 (1363 – 2060) [DU 10528]
Sheep Number:- S056C
Bleed Number:- First Bleed
Concentration:- 0.24 mg/ml
Formulation:- Phosphate Buffered Saline
Storage temperature:- –20 °C
Purification Method:- Affinity purified against GST-PTPL1 (1363 – 2060) and then depleted against GST
Working Concentration:- 1 µg/ml for immuno-blotting
1 µg per 1 mg of cellular lysate for immunoprecipitation

Publication Reference:-

Not Published with this antibody



25 µg of various mouse tissue lysates and HEK293 cell lysate were subjected to SDS-Page, transferred to nitrocellulose and immunoblotted with anti-PTPL1 (1363 – 2060) at 1 µg/ml.

Binding of the primary antibody was detected using rabbit peroxidase conjugated anti-sheep IgG antibody (1 in 10, 000 dilution, Pierce) followed by enhanced chemiluminescence (ECL, Amersham).