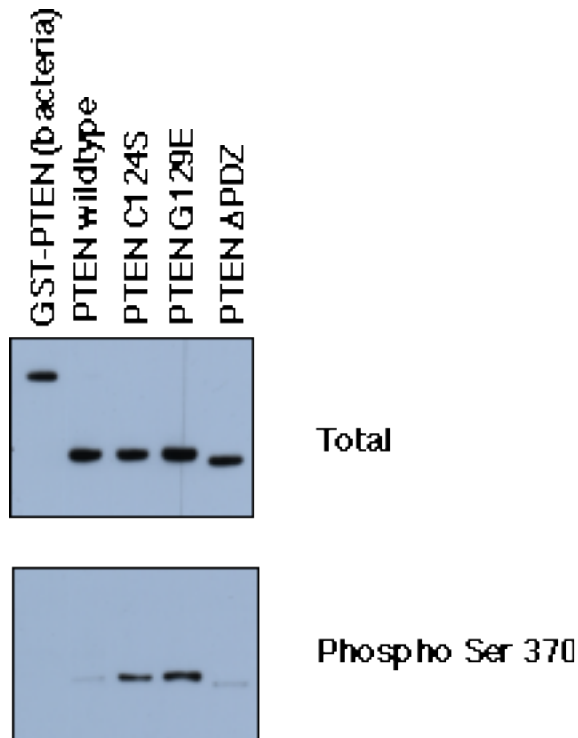


## Antibody Datasheet

<b>Product description:-</b>	Anti-PTEN phospho Ser 370
<b>Antigen:-</b>	TPDVS*DNE [* is phospho Serine] Residues 366 – 373 of human PTEN
<b>Sheep Number:-</b>	S507B
<b>Bleed Number:-</b>	Second Bleed
<b>Concentration:-</b>	0.14 mg/ml
<b>Formulation:-</b>	Phosphate Buffered Saline
<b>Storage temperature:-</b>	–20 °C
<b>Purification Method:-</b>	Affinity purified against phospho peptide
<b>Working Concentration:-</b>	0.5 $\mu$ g/ml for western blotting after immunoprecipitation Include the unphosphorylated form of the peptide immunogen at 10 $\mu$ g/ml to the diluted antibody  Immunoprecipitate with Santa Cruz anti-PTEN monoclonal (A2B1)



U87MG cells were infected with viruses encoding PTEN wildtype, PTEN phosphatase dead (C124S), PTEN lipid phosphatase dead (G129E) and PTEN lacking the PDZ domain ( $\Delta$ PDZ). PTEN was immunoprecipitated from cellular extracts using the Santa Cruz A2B1 PTEN monoclonal antibody. The immunoprecipitate was separated by SDS Page, transferred to nitrocellulose membrane and blotted with the appropriate antibody. The upper panel was probed with a total PTEN antibody (Santa Cruz N19) and the lower panel with anti-PTEN Ser 370 phospho specific antibody.

Binding of the primary antibody was detected using rabbit peroxidase conjugated anti-sheep IgG antibody (1 in 10,000 dilution, Pierce) followed by enhanced chemiluminescence (ECL, Amersham).