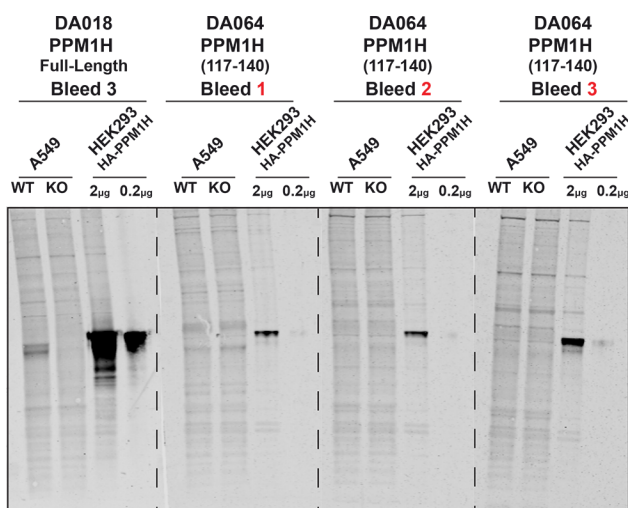


## Antibody Datasheet

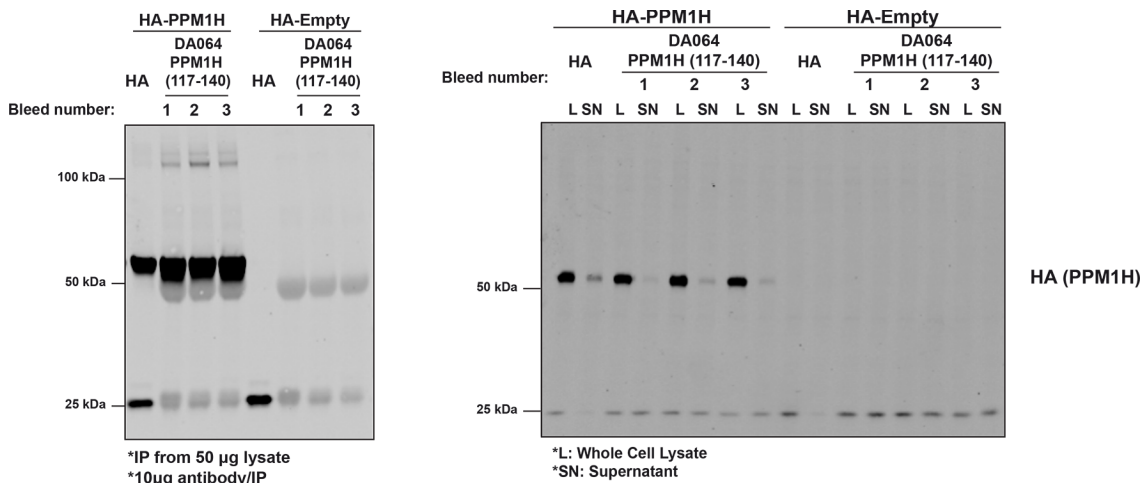
<b>Product description:-</b>	Anti-PPM1H (117 – 140)
<b>Antigen:-</b>	NSSKRRSSLPNGEGLQLKENSESE (residues 117 - 140)
<b>Sheep Number:-</b>	DA064
<b>Formulation:-</b>	Phosphate Buffered Saline
<b>Storage temperature:-</b>	-20 °C
<b>Purification Method:-</b>	Affinity purified against peptide antigen

### Immunoblotting:



20 ug of A549 WT or PPM1H KO lysate, and either 2 or 0.2 ug HA-PPM1H overexpressing Hek293 lysate were subjected on SDS-Page analysis before being transferred to nitrocellulose membrane and immunoblotted with anti- PPM1H antibody (DA018) or anti-PPM1H (117 – 140) DA064 at a concentration of 1ug/ml

### Immunoprecipitation:



Left panel - Anti-PPM1H (117 – 140) DA064 bleeds (1 – 3) were coupled to A/G Agarose beads at a 1:1 ratio (non-covalently coupled, the heavy and light chains are still visible). 10 ul of either the peptide beads (10ug/IP) or HA beads were incubated with 50 ug HA-PPM1H or HA-Empty expressing Hek293 lysates for one hour at 4 degrees. The immunoprecipitants were subjected on SDS-Page analysis before being transferred to nitrocellulose membrane and immunoblotted with anti-HA antibody.

Right panel - Depletion of PPM1H from these lysates was performed by comparing the input lysate with the post-IP supernatant by loading 10ug of input lysate/ post IP supernatant for each IP and immunoblotted using anti-HA antibody.