

Antibody Datasheet

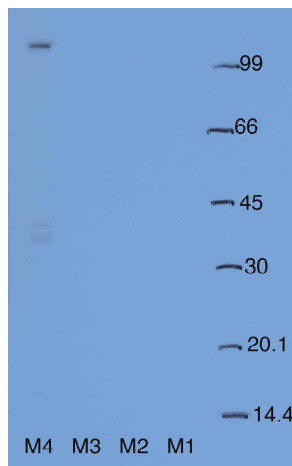
Product description:-	Anti-MARK4 (1 – 20)
Antigen:-	MSSRTVLAPGNDRNSDTHGT
Sheep Number:-	S257C
Bleed Number:-	All Three Bleeds
Formulation:-	Phosphate Buffered Saline
Storage temperature:-	–20 °C
Purification Method:-	Affinity purified peptide
Working Concentration:-	1 µg/ml for immuno blotting

Publication Reference:-

“LKB1 is a master kinase that activates 13 kinases of the AMPK subfamily, including MARK/PAR-1”

Lizcano JM, Goransson O, Toth R, Deak M, Morrice NA, Boudeau J, Hawley SA, Udd L, Makela TP, Hardie DG and Alessi DR. (2004)
EMBO J. 23 (4), 833 - 843

This antibody detects MARK4 and no other MARK isoform.



HEK293 cells were transfected with GFP-MARK1, GFP-MARK2, GFP-MARK3 and GFP-MARK4 and 20 µg of the cell lysates was subjected to SDS-PAGE, transferred to nitrocellulose membrane and immunoblotted with anti-MARK4 (1 – 20) [S257C] antibody. Binding of the primary antibody was detected using rabbit peroxidase conjugated antish sheep IgG antibody (1:10.000 dilution, Pierce) followed by enhanced chemiluminescence (ECL, Amersham).