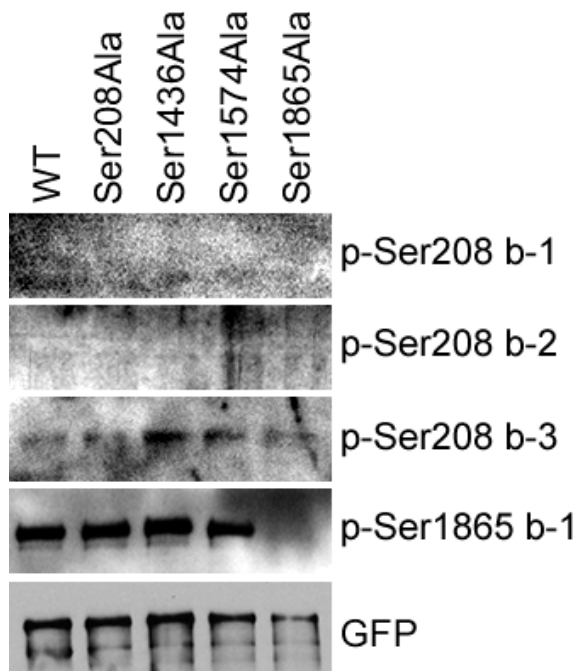


Antibody Datasheet

Product description:-	Anti-KIAA0802 phospho Ser 208
Antigen:-	RRISHTDS*SSDLSDR [residues 202 – 214 of human]
Sheep Number:-	S151D
Formulation:-	Phosphate Buffered Saline
Storage temperature:-	–20 °C
Purification Method:-	Affinity purified against phospho specific peptide
Working Concentration:-	This antibody does not detect KIAA0802 phosphorylated on Serine 208



Wildtype and various Serine to Alanine mutants of GFP-KIAA0802 were transfected into HeLa cells. HeLa cell extracts were then immunoblotted with anti-KIAA0802 phospho Ser 208 (S151D), anti-KIAA0802 phospho Ser 1865 and anti-GFP antibodies.