

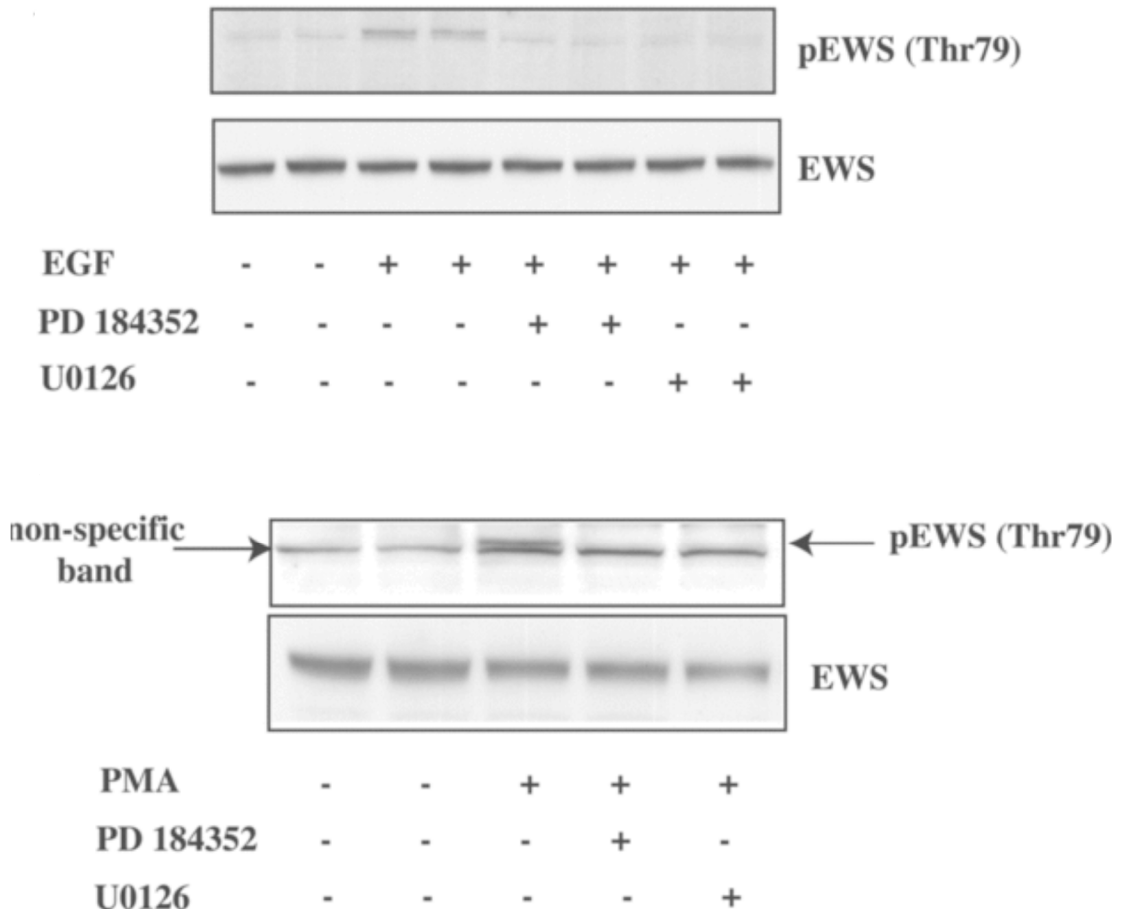
**Antibody Datasheet**

**Product description:-** Anti-EWS  
**Antigen:-** GST EWS [DU 1883]  
**Sheep Number:-** S418B  
**Formulation:-** Phosphate Buffered Saline  
**Storage temperature:-** -20 °C  
**Purification Method:-** Affinity purified GST-EWS and then depleted against GST  
**Working Concentration:-** 1ug/ml for immunoblotting

**Publication Reference:-**

“Phosphorylation of Ewing's sarcoma protein (EWS) and EWS-Fli1 in response to DNA damage”

Klevernic IV, Morton S, Davis RJ and Cohen P (2009)  
 Biochem J. 418, 625 - 634



HEK293 cells were incubated for 1 hour with (+) or without (-) 2  $\mu$ M PD 184352 or 10  $\mu$ M U0126, then stimulated for 10 mins with 100 ng/ml EGF (Upper panels) or 100 ng/ml PMA (lower panels) and lysed. Cell extract (60  $\mu$ g protein) was denatured, subjected on SDS/PAGE and immunoblotted with anti-EWS phospho Thr 79 (S423B) or anti-EWS (S418B).

Note: that in the lower panel phosphorylated EWS runs just above a non-specific band as indicated.