



Annexin A1 (1 - 346)

Catalog Number (DU Number):

DU38293

Accession:

NM_000700.2

Expression

bacteria

Terminus and Tag:

N-Term GST Uncleaved

Purification Method:

GSH Sepharose

Calculated Molecular Mass:

Mono-Isotopic Mass: 65,496.62

Average Mass: 65,538.41

Purity:

>80 %

Storage Buffer:

50 mM Tris-HCl pH 7.5, 270 mM Sucrose, 150 mM NaCl, 0.1 mM EGTA, 0.1 % 2-mercaptoethanol, 0.02 % Brij-35, 1 mM benzamidine, 0.2 mM PMSF

Storage Temperature:

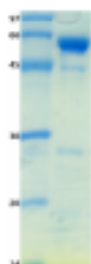
-70 °C

Theoretical pI:

6.09

Gel Information :

Gel Image 1:



Native Sequence:

Amino acids M1 – N346(end) of human Annexin A1. Residue M232 of the fusion protein is equivalent to M1 of the native enzyme. The GST tag is located at residues 1 – 220.

Protease Cleavage:

PreScission (LEVLFQGP) residues 221 - 228

Cloning Sites:

BamH1 and Not1 sites of pGEX6P1

Price per aliquot (100µg):

£100.00