



GRB2 (1 - 217)

Catalog Number (DU Number):

DU31180

Accession:

NM_002086.4

Expression

bacteria

Terminus and Tag:

N-Term GST Uncleaved

Purification Method:

GSH Sepharose

Calculated Molecular Mass:

Mono-Isotopic Mass: 51, 997.07 daltons

Average Mass: 52, 030.52 daltons

Purity:

>80 %

Storage Buffer:

50 mM Tris-HCl pH 7.5, 150 mM NaCl, 270 mM sucrose, 0.1 mM EGTA, 0.1 % 2-mercaptoethanol, 0.03 % Brij-35, 1 mM benzamidine, 0.2 mM PMSF

Storage Temperature:

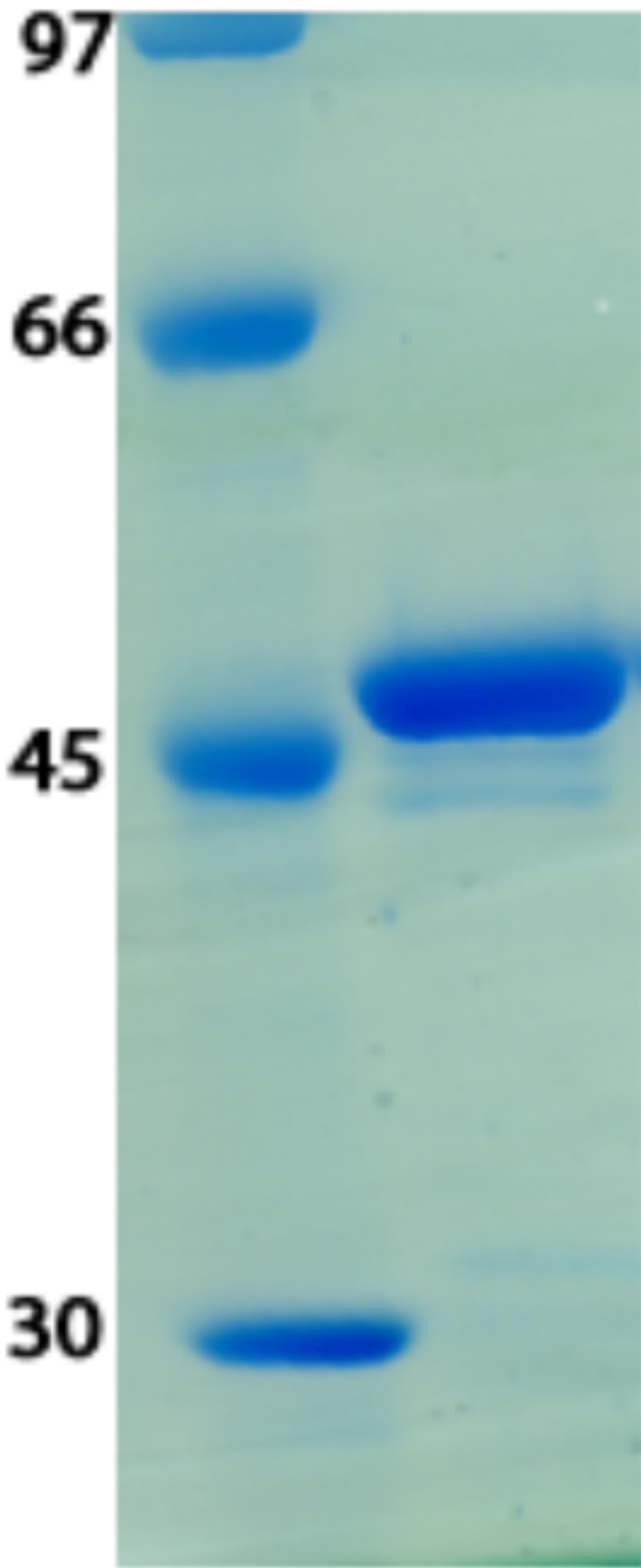
-70 °C

Theoretical PI:

5.81

Gel Information :

Gel Image 1:



Native Sequence:

Amino acids M1 – V217 (end) of human GRB2. Residue M232 of fusion protein is equivalent to M1 of the native enzyme. The GST tag is located at residues 1 – 220.

Protease Cleavage:

Proteolysis site (LEVLFGGP) at residues 221 – 228

Cloning Sites:

BamH1 and Not1 sites of pGex6P-1

Price per aliquot (100µg):

£110.00

