



Annexin A2 (2 - 339)

Catalog Number (DU Number):

DU600

Accession:

NM_004039.2

Expression

bacteria

Terminus and Tag:

N-Term GST Uncleaved

N-Term HA Uncleaved

Purification Method:

GSH Sepharose

Enzymatic Assay Format:

Substrate for PKC

Assay Substrate:

Substrate for PKC

Calculated Molecular Mass:

Mono-Isotopic Mass: 66,613.96

Average Mass: 66,656.49

Protein Activity:

Constitutively Active

Purity:

>80 %

Storage Buffer:

50 mM Tris-HCl pH 7.5, 270 mM Sucrose, 150 mM NaCl, 0.1 mM EGTA, 0.1 % 2-mercaptoethanol, 0.02 % Brij-35, 1 mM benzamidine, 0.2 mM PMSF

Storage Temperature:

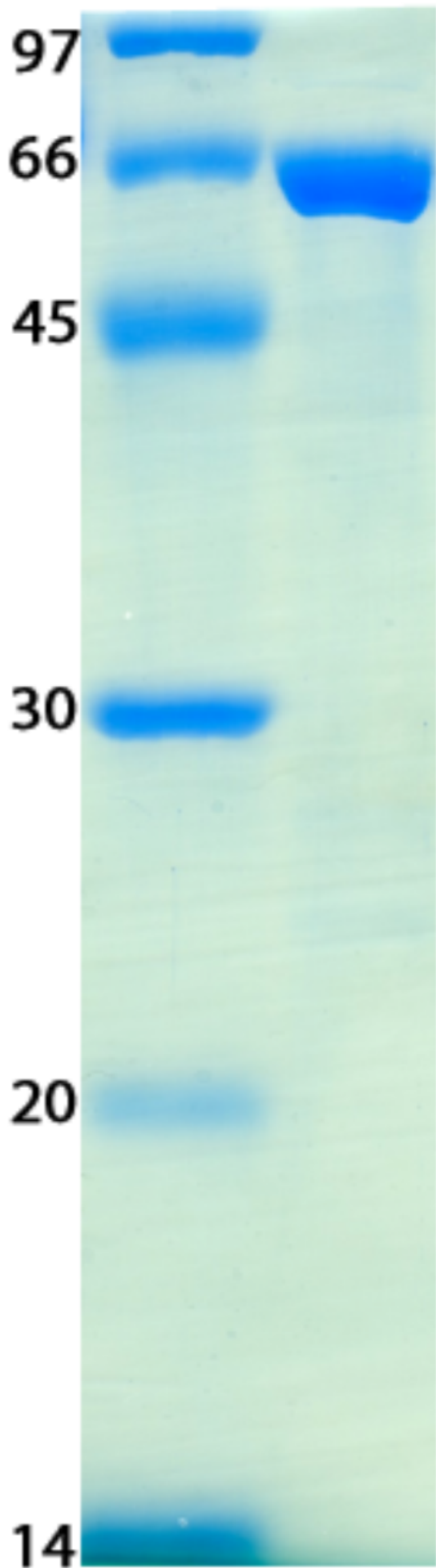
-70 °C

Theoretical PI:

6.04

Gel Information :

Gel Image 1:



Native Sequence:

Amino acids S2– D339 (end) of human Annexin A2. Residue S244 of the fusion protein is equivalent to S2 of the native enzyme. The GST tag is located at residues 1 – 220 and the HA tag is located at residues 235 - 243.

Protease Cleavage:

PreScission (LEVLFQGP) residues 221 - 229

Cloning Sites:

BamH1 and Sal1 sites of pGEX 6P-1

Price per aliquot (100µg):

£110.00