



## CK1 epsilon (1 - 416)

Catalog Number (DU Number):

**DU5127**

Accession:

**NM\_152221**

Expression

**bacteria**

Terminus and Tag:

**N-Term GST Uncleaved**

Purification Method:

**GSH Sepharose**

Enzymatic Buffer:

**50 mM Tris-HCl pH 7.5, 0.1 % 2-mercaptoethanol, 0.1 mM EGTA, 10 mM MgAc**

Enzymatic Substrate:

**KRRRALS\*VASLPGL (where S\* is phospho Serine) Final concentration: 300 μM**

Calculated Molecular Mass:

**Mono-Isotopic Mass: 75, 142.42 daltons**

**Average Mass: 75, 190.42 daltons**

Protein Activity:

**Constitutively Active**

Purity:

**85 %**

Storage Buffer:

**50 mM Tris-HCl pH 7.5, 270 mM Sucrose, 150 mM NaCl, 0.1 mM EGTA, 0.1 % 2-mercaptoethanol, 0.02 % Brij-35, 0.2 mM PMSF, 1 mM Benzamidine**

Storage Temperature:

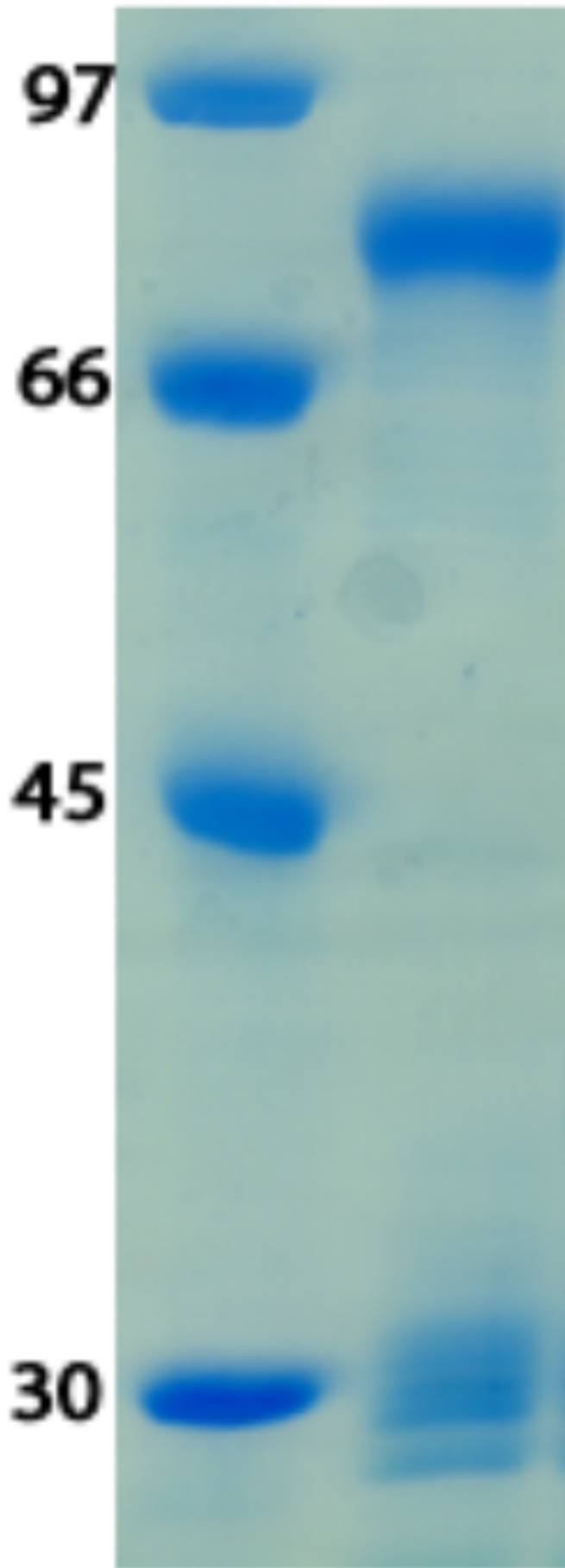
**-70 °C**

Theoretical pI:

**9.10**

Gel Information :

**Gel Image 1:**



Native Sequence:

**Amino acids M1 – K416 of human CK1 epsilon. Residue M243 of the fusion protein is equivalent to M1 of the native enzyme. The GST tag is located at residues 1 - 220.**

Protease Cleavage:

**PreScission (LEVLFGQP) residues 221 - 228**

Cloning Sites:

**NotI sites of pGEX-6P-2**

Price per aliquot (100µg):

**£110.00**

