



CK1 gamma 2 (1 - 415)

Long Name:

Casein kinase 1 Gamma 2

Catalog Number (DU Number):

DU35306

Accession:

BC0186932

Expression

bacteria

Terminus and Tag:

N-Term GST Uncleaved

Purification Method:

N-terminal GST

Enzymatic Buffer:

50 mM Tris-HCl pH 7.5, 0.1 mM EGTA, 0.1 % 2-mercaptoethanol, 10 mM MgAc

Enzymatic Substrate:

KRRRALS*VASLPGL (where S* is phospho Ser) Final concentration: 300 μM

Calculated Molecular Mass:

Mono-Isotopic Mass: 74, 233.82 daltons

Average Mass: 74, 281.43 daltons

Protein Activity:

Constitutively Active

Purity:

85 %

Storage Buffer:

50 mM Tris-HCl pH 7.5, 270 mM Sucrose, 150 mM NaCl, 0.1 mM EGTA, 0.1 % 2-mercaptoethanol, 0.02 % Brij-35, 1 mM benzamidine, 0.2 mM PMSF

Storage Temperature:

-70 °C

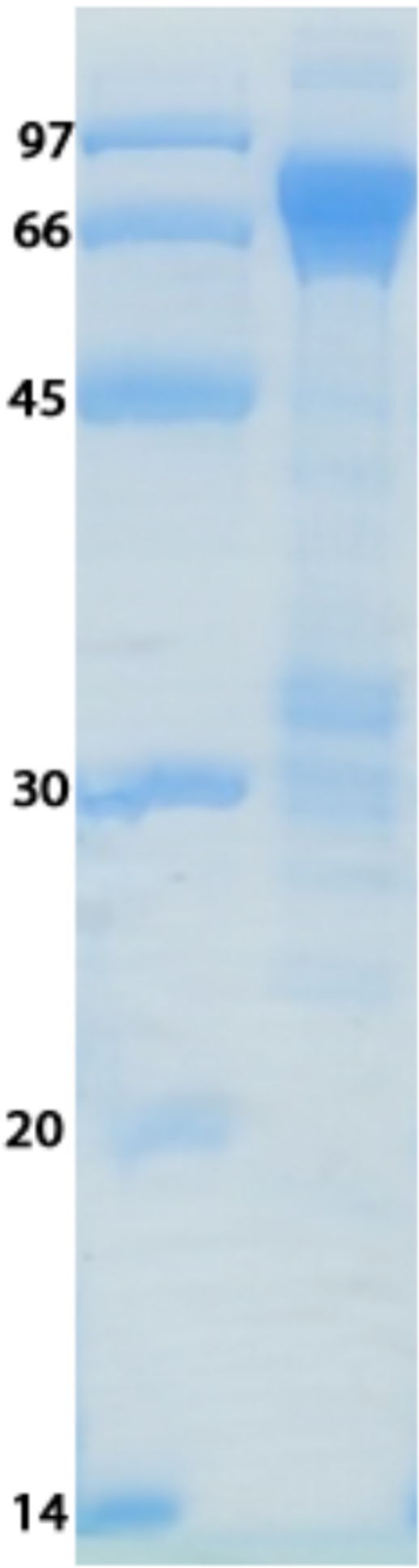
Theoretical pI:

8.56

Gel Information :

Gel Image 1:





Native Sequence:

Amino acids M1 – K415 (end) of human CSNK1G2. Residue M232 of the fusion protein is equivalent to M1 of the native enzyme. The GST tag is located at residues 1 – 220.

Protease Cleavage:

PreScission (LEVLFGQP) residues 221 - 229

Cloning Sites:

BamH1 and Not1 sites of pGEX 6P-1

Price per aliquot (100µg):

£110.00

