



CK1 alpha 1 (2 - 337)

Catalog Number (DU Number):

DU329

Accession:

X80693

Expression

bacteria

Terminus and Tag:

N-Term GST Uncleaved

Purification Method:

GSH Sepharose

Enzymatic Buffer:

50 mM Tris-HCl pH 7.5, 0.1 % 2-mercaptoethanol, 0.1 mM EGTA, 10 mM MgAc

Enzymatic Substrate:

KRRRALS*VASLPGL (where S* is phospho Ser) Final concentration: 300 μ M

Calculated Molecular Mass:

Mono-Isotopic Mass: 65, 565.48 daltons

Average Mass: 65, 607.83 daltons

Purity:

>80 %

Storage Buffer:

50 mM Tris-HCl pH 7.5, 150 mM NaCl, 270 mM sucrose, 0.1 mM EGTA, 0.1 % 2-mercaptoethanol, 0.03 % Brij-35, 1 mM benzamidine, 0.2 mM PMSF

Storage Temperature:

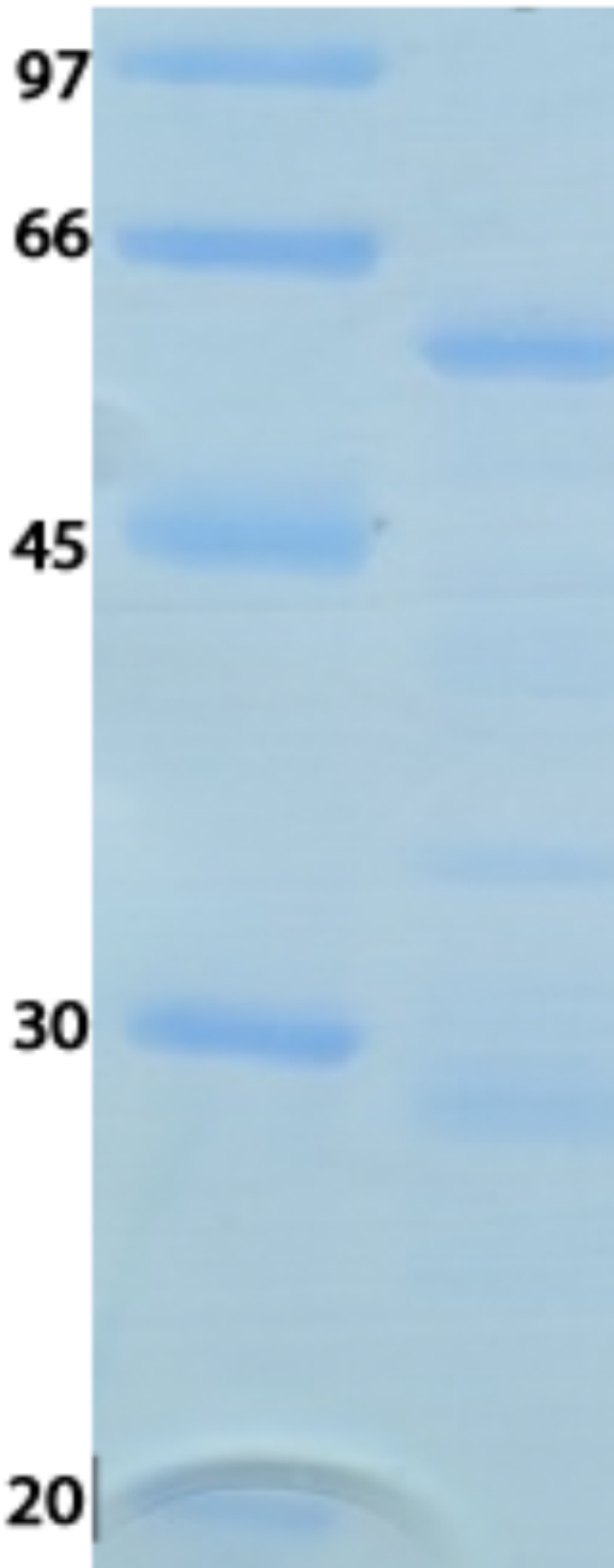
-70 °C

Theoretical pI:

9.02

Gel Information :

Gel Image 1:



Native Sequence:

Amino acids A2 – F337 (end) of human CK1 alpha 1. Residue A232 of the fusion protein is equivalent to A2 of the native enzyme. The GST tag is located at residues 1 – 220.

Protease Cleavage:

Proteolysis site (LEVLFGP) at residues 221 - 228

Cloning Sites:

BamH1 and Not1 sites of pGEX-6P-1

Price per aliquot (100µg):

£110.00

