



14-3-3 eta (1 - 246)

Catalog Number (DU Number):

DU8263

Accession:

NM_003405

Expression

bacteria

Terminus and Tag:

N-Term 6His Uncleaved

Purification Method:

Ni²⁺-NTA agarose

Calculated Molecular Mass:

Mono-Isotopic Mass: 31, 742.58

Average Mass: 31, 762.62

Purity:

>85 %

Storage Buffer:

25 mM Hepes pH 7.5, 50 % glycerol, 1 mM DTT, 0.2 mM PMSF, 1 mM Benzamidine.

Storage Temperature:

-20 °C

Theoretical PI:

5.3

Gel Information :

Gel Image 1:

97

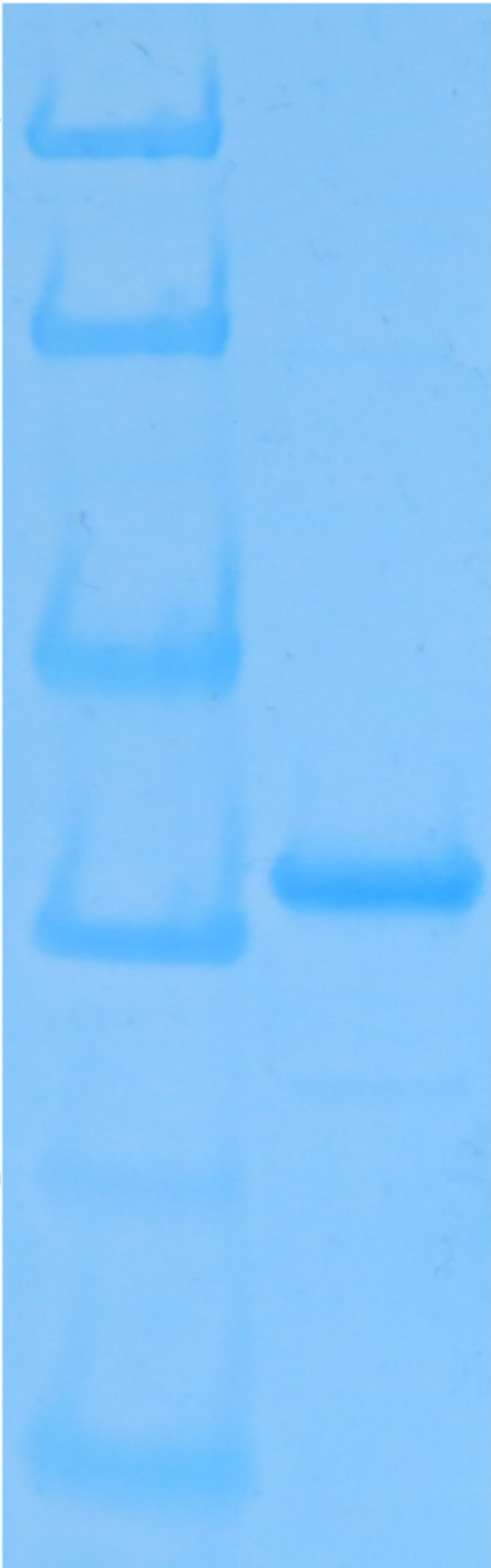
66

45

30

20

14



Native Sequence:

Amino acids M1 – N246 (end) of human 14-3-3 eta. Residue M35 of the fusion protein is equivalent to M1 of the native protein. The His(6) tag is located at residues 5 – 10.

Protease Cleavage:

Thrombin (LVPRGS) between residues 14 - 19

Cloning Sites:

BamH1 and Not1 of pET 28a

Price per aliquot (100µg):

£110.00

