



## Choline Kinase beta (1 - 395)

Catalog Number (DU Number):

**DU19590**

Accession:

**NM\_005198**

Expression

**bacteria**

Terminus and Tag:

**N-Term GST Uncleaved**

Purification Method:

**GSH Sepharose**

Enzymatic Assay Format:

**ADP Glo**

Enzymatic Buffer:

**12.5 mM glycine-NaOH pH 8.5, 50 mM KCl, 2.5 mM MgCl<sub>2</sub>**

Enzymatic Substrate:

**Choline chloride; Final concentration: 0.2 mM**

Calculated Molecular Mass:

**Mono-Isotopic Mass: 74,139.13**

**Average Mass: 74,186.83**

Protein Activity:

**Constitutively Active**

Purity:

**>75 %**

Storage Buffer:

**25 mM glycine-NaOH pH 8.5, 67 mM KCl, 2 mM EDTA, 270 mM Sucrose, 0.1 % Bmercaptoethanol  
1 mM benzamidine, 0.2 mM PMSF**

Storage Temperature:

**-70 °C [Long term stability to be determined]**

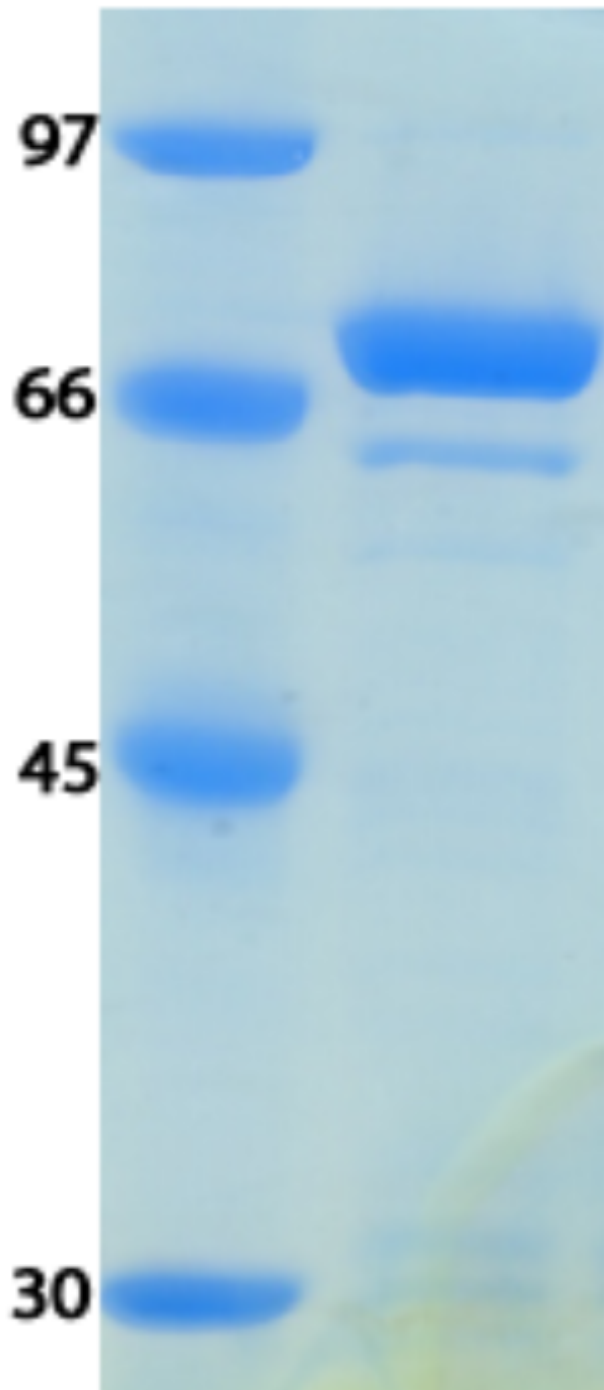
Theoretical pI:

**5.48**

Gel Information :

Gel Image 1:





Native Sequence:

**Amino acids M1 – 395 (end) of human Choline Kinase Beta. Residue M232 of the fusion protein is equivalent to M1 of the native enzyme. The GST tag is located at residues 1 – 220.**

Protease Cleavage:

**PreScission (LEVLFQGP) residues 221 - 228**

Cloning Sites:

**PreScission (LEVLFQGP) residues 221 - 228**

Price per aliquot (100µg):

**£110.00**

