



## DYRK1a (1 - 502)

Catalog Number (DU Number):

**DU19040**

Accession:

**NM\_1304372**

Expression

**bacteria**

Terminus and Tag:

**N-Term GST Uncleaved**

Purification Method:

**GSH Sepharose**

Enzymatic Assay Format:

**Standard filter binding assay**

Enzymatic Buffer:

**50 mM Tris-HCl pH 7.5, 0.1 % 2-mercaptoethanol, 0.1 mM EGTA, 10 mM MgAc**

Enzymatic Substrate:

**WOODtide [KKISGRLSPIMTEQ] Final concentration: 500  $\mu$ M**

Calculated Molecular Mass:

**Mono-Isotopic Mass: 84, 458.95 daltons**

**Average Mass: 84, 513.34 daltons**

Protein Activity:

**Constitutively Active**

Purity:

**>70 %**

Storage Buffer:

**50 mM Tris-HCl pH 7.5, 270 mM Sucrose, 150 mM NaCl, 0.1 mM EGTA, 0.1 % 2-mercaptoethanol, 0.02 % Brij-35, 0.2 mM PMSF, 1 mM Benzamidine**

Storage Temperature:

**-70 °C**

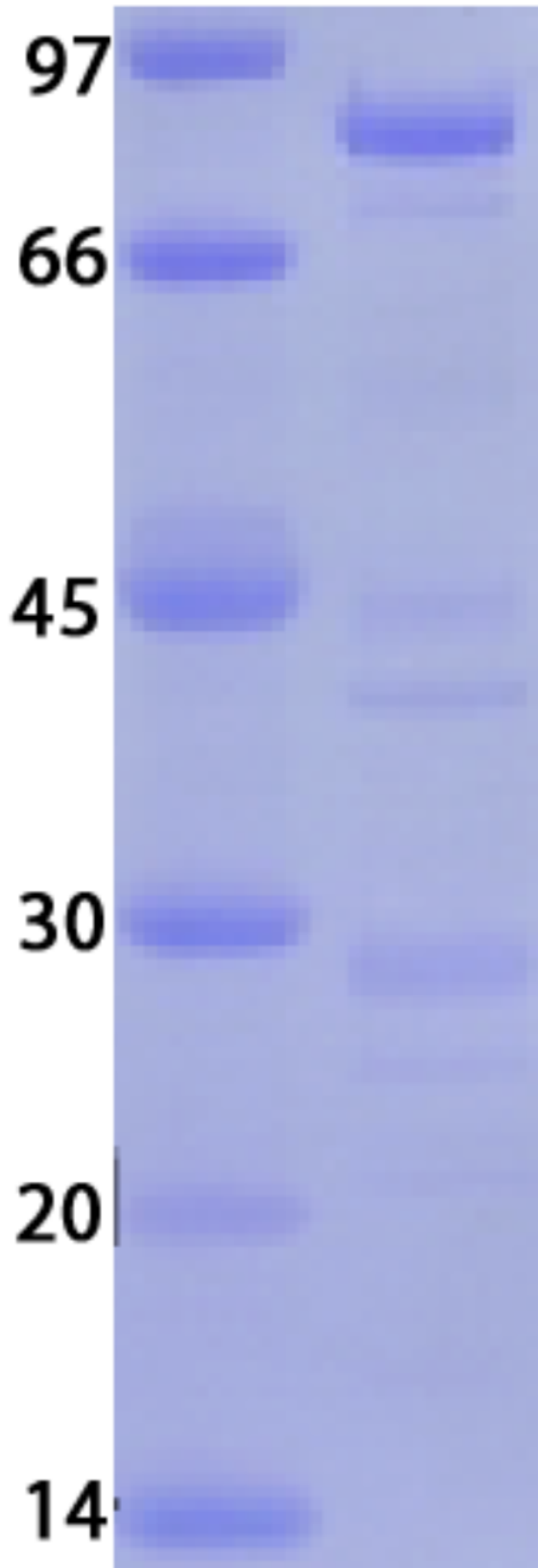
Theoretical pI:

**8.68**

Gel Information :

Gel Image 1:





Native Sequence:

**Amino acids M1 – S502 of human DYRK1a. [Full length protein ends at residue V7540] Residue M232 of the fusion protein is equivalent to M1 of the native enzyme. The GST tag is located at residues 1 - 220 of the fusion protein.**

Protease Cleavage:

**PreScission (LEVLFQGP) residues 221 - 228**

Cloning Sites:

**BamH1 and Not1 site of pGEX6P-1**

Price per aliquot (100µg):

**£110.00**

