



Inhibitor 2 (1 - 205)

Catalog Number (DU Number):

DU3247

Accession:

NP_006232

Expression

bacteria

Terminus and Tag:

Purification Method:

Boil (15 mins), Q-Sepharose and Mono-Q Method based on: Helps, NR. Street, AJ. Elledge, SJ. And Cohen, PTW. (1994). "Cloning of the complete coding region for human protein phosphatase inhibitor 2 using the two hybrid system and expression of inhibitor 2 in E. coli" FEBS letters. 340. 93 - 98.

Enzymatic Assay Format:

Standard phosphatase assay IC50 of 1 nM against PP1 gamma using [32P] phosphorylase a as substrate

Calculated Molecular Mass:

Mono-Isotopic Mass: 23, 001.8 daltons

Average Mass: 23, 016.13 daltons

Protein Activity:

Constitutively Active

Publication info:

(PMID:)

Purity:

90 %

Storage Buffer:

20 mM Ammonium acetate pH 7, 0.1 mM EGTA, 1 mM DTT

Storage Temperature:

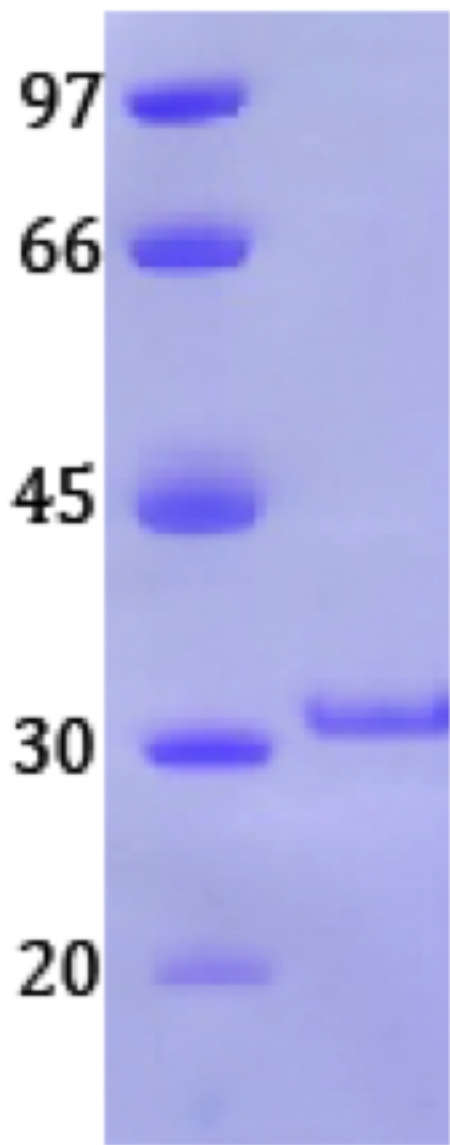
-70 °C

Theoretical PI:

4.57

Gel Information :

Gel Image 1:



Native Sequence:
Amino acids M1 – S205 (end) of human Inhibitor 2.

Protease Cleavage:
None

Cloning Sites:
Nde1 and BglII of pCW

Price per aliquot (100µg):
£110.00