



Cofilin 2 (1 - 166)

Long Name:

Cofilin 2 [1 - 166] (muscle isoform)

Catalog Number (DU Number):

DU427

Accession:

NM_021914

Expression

bacteria

Terminus and Tag:

N-Term GST Uncleaved

Purification Method:

GSH Sepharose

Enzymatic Assay Format:

Substrate for LIMK1

Calculated Molecular Mass:

Mono-Isotopic Mass: 45, 531.49 daltons

Average Mass: 45, 560.78 daltons

Protein Activity:

Constitutively Active

Purity:

95 %

Storage Buffer:

50 mM Tris-HCl pH 7.5, 50 % glycerol, 150 mM NaCl, 0.1 mM EGTA, 0.1 % 2-mercaptoethanol, 0.02 % Brij-35, 0.2 mM PMSF, 1 mM Benzamidine.

Storage Temperature:

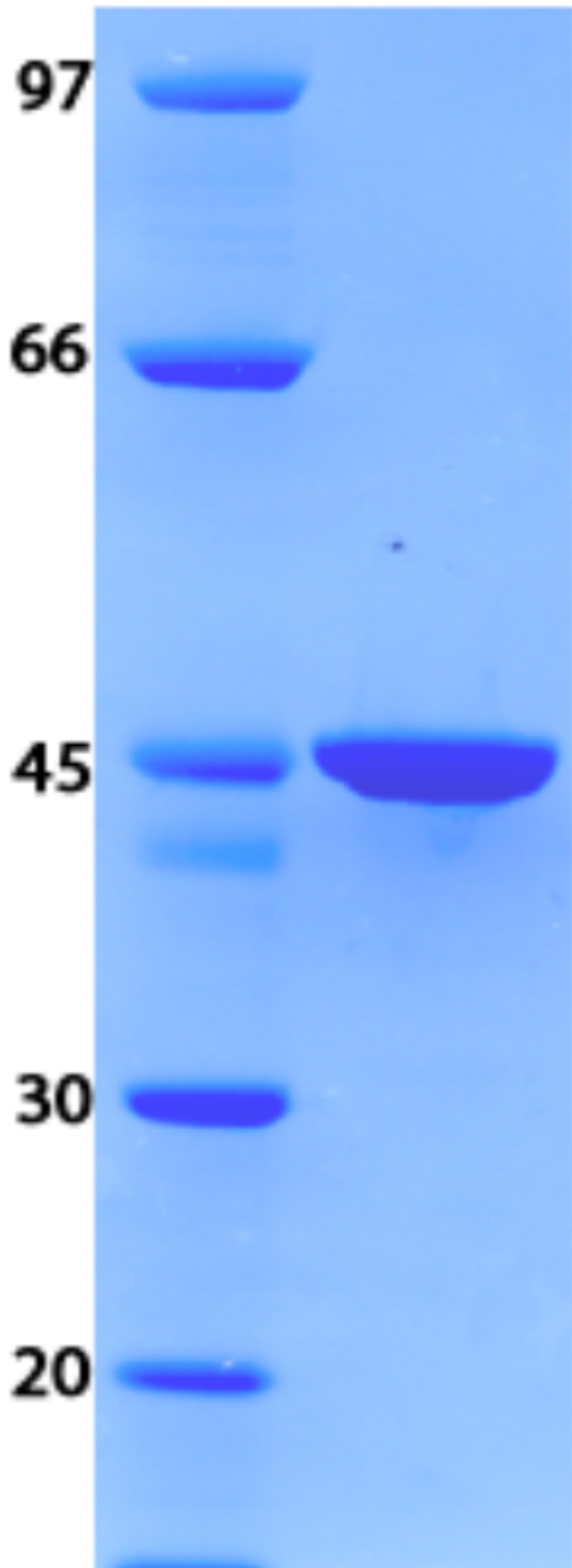
-20 °C

Theoretical PI:

6.07

Gel Information :

Gel Image 1:



Native Sequence:

Amino acids M1 – L166 (end) of human Cofilin 2. Residue M232 of the fusion protein is equivalent to M1 of the native protein. The GST tag is located at residues 1 - 220

Protease Cleavage:

PreScission (LEVLFQGPL) residues 221 - 229

Cloning Sites:

BamH1 and Sal1 of pGEX-6P-1

Price per aliquot (100µg):

£110.00