



## Alpha Synuclein

Catalog Number (DU Number):

**DU30005**

Accession:

**NM\_001146054.1**

Expression

**bacteria**

Terminus and Tag:

**N-Term GST Uncleaved**

Purification Method:

**GSH Sepharose**

Calculated Molecular Mass:

**Mono-Isotopic Mass: 41,257.86**

**Average Mass: 41,284.32**

Purity:

**>80 %**

Storage Buffer:

**50 mM Tris-HCl pH 7.5, 150 mM NaCl, 270 mM sucrose, 0.1 mM EGTA, 0.1 % 2-mercaptoethanol, 0.03 % Brij-35, 1 mM benzamidine, 0.2 mM PMSF**

Storage Temperature:

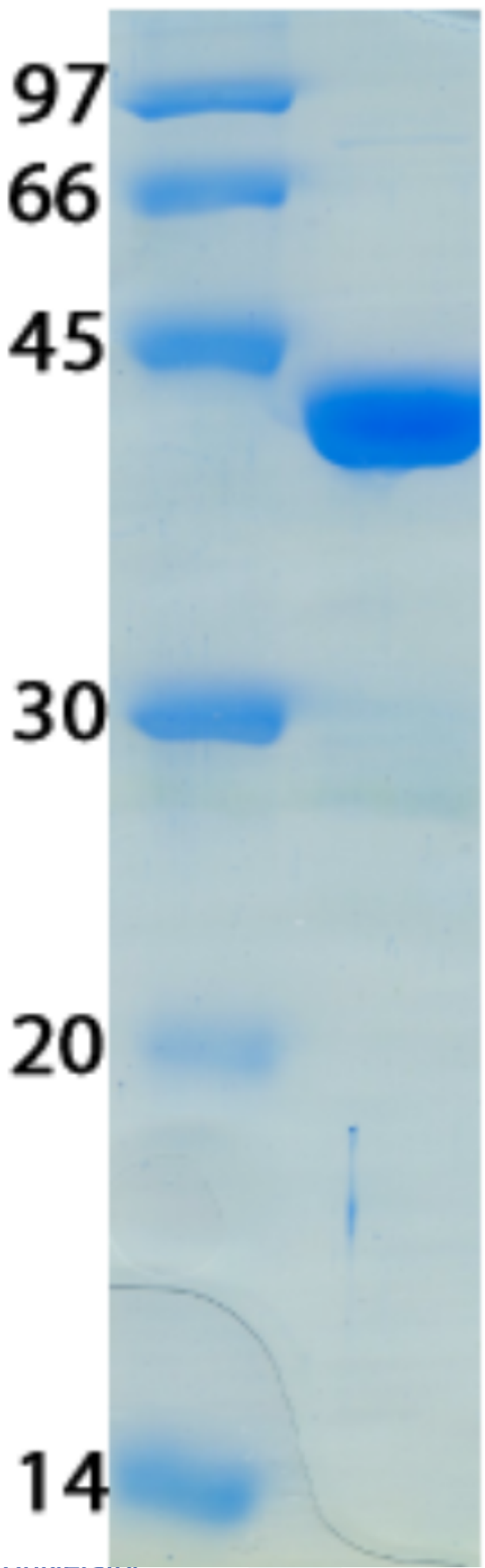
**-70 °C**

Theoretical pI:

**5.13**

Gel Information :

**Gel Image 1:**



Native Sequence:

**Amino acids M1 – A140 (end) of human alpha synuclein. Residue M232 of fusion protein is equivalent to M1 of the native enzyme. The GST tag is located at residues 1 – 220.**

Protease Cleavage:

**Precission site (LEVLFQGP) at residues 221 – 228**

Cloning Sites:

**Bgl2 (BamH1 site) and Not1 site of pGex6P-1**

Price per aliquot (100µg):

**£110.00**